



TIMBER TIMES

On the Web at: <http://www.woodcny.org>

On Facebook – WoodCNY

Volume 7, Issue 1

January 2024



The Woodworkers of Central New York is a Chapter of the [American Association of Woodturners](#)

THANK YOU – TOY DONATION 2023

JANUARY EVENTS

Wednesday, January 3rd

@6:30pm

Woodworking SIG Demo

Veneering Basics with Terry Dote

In Person in Community Room at Belgium Cold Springs Fire, 7920 River Rd, Baldwinsville or **Via Zoom** [[link to be sent week of meeting](#)]

Tuesday, January 9th @6:30pm

Turning SIG Demo

Embellishing Your Projects with Robert Love

In Person in Community Room at Belgium Cold Springs Fire, 7920 River Rd, Baldwinsville or **Via Zoom** [[link to be sent week of meeting](#)]

Saturday, January 13th 9am - noon

Club Workshop at Eight Acres Event Center, Baldwinsville [[address sent week of event](#)]

Thursday, January 18th @6:30pm

Carving SIG Workshop

Carving a Rose with Gary Morison

In Person in Community Room at Beaver Lake Nature Center, 8477 East Mud Lake Road, Baldwinsville

Date TBD @ 6:30pm

WWCNY Board of Directors Organizational & Regular Meetings

Over 30 years ago a small group of people formed a woodworking club here in Syracuse. In addition to educating the members, these men decided they would build and donate toys to the St. Rose of Lima Food Pantry. Now, 30-some years later, our membership is much larger and while some of the toys are built and many are purchased, club members are still very generous.



Most of the donations were delivered during the annual holiday party on December 3rd, while some arrived shortly thereafter. On Tuesday, December 12th, the WWCNY sleigh delivered your donations to Sister and her merry band of elves.

Prior to the final delivery, the collection returned to the firehouse for the photos below. Just 4 of the 2 dozen bears were added to the photo. The last delivery, six beautiful cradles with babies and bedding are shown in a separate photo.

Thank you again for stepping up. Plan now for your 2024 donation! We will gather them on Sunday, December 8th at the holiday party!



INSIDE THIS ISSUE

Thank You – Toy Donation	1
2023 Ornament Challenge	2
January 2024 Events	3-4
Club Workshop	4
Memberships & Renewal	5
NYS Farm Show	5
Mike's Corner	6
Wood Education – Lignum Vitae	7
From the President	8
NWA Showcase & Totally Turning	9
Beads of Courage Boxes	10
2024 Maker Faire	10
Educational Scholarship	11
Tops Needed!	11
Shop Time & More Shop Time	12-13
Recent Projects–Dec 2023	14-15
The Woodworking Shows	15
December 9, 2023 Workshop	16
4 Simple, No-Hinge Box Tops that Rock	17-19
Tool Talk – Lathe Maintenance 101	20-22
Make a Safe Small Miter Saw Cut	22
Preventable Fires	23
Your Help Still Needed!	24
Corporation & Leadership Information	25
Crafts for Charities–Donations Needed	26
Videos of Past Demonstrations	27
Sending Photos	27
Corporation Supplies, etc.	28
Sharpening Services	28
American Association of Woodturners Info	29
In-Person Classes	29
Classes, Events & Symposiums	30
Directions to Locations	31
Meeting Schedules	32-33
Classifieds	34
Area Lumber Suppliers	34

2023 ORNAMENT CHALLENGE

The annual international *ornament* challenge is coordinated by Alan Stratton, the man who runs the website [AsWoodTurns](http://AsWoodTurns.com), and Matt Deighton of [Woodturners Worldwide](http://WoodturnersWorldwide.com). For 2023, there were over 400 entries of a variety of projects. Looking at the entries, several were not individual ornaments but rather vignettes or even large pieces (*such as the Schwibbogen #151*).

Prizes were awarded to 12 people based on the voting with the top prize going to entry #246. I encourage you to scroll through all the submittals and listen to the summary comments at www.aswoodturns.com/challenges/2023-ornament-challenge.

We did not have as many submittals as in 2022 so we did not win an IRD from Alan. Ornaments from Mike White and Robert Ward were part of their donations for our *Crafts for Charity* fund raisers. For 2024, I urge you to start thinking and creating your projects, taking photos as you go along so you are ready on November 1st to submit your entry.



Members Participating in 2023 & Entry Numbers

Jim & Shelly Kent – 002
 Shelly Kent – 003
 Mike White – 021, 024, 025
 Robert Ward – 022, 023 (*Mistakenly identified as Mike White*)
 Tom Cooney – 200, 201, 202, 203, 204
 Eric Kiehl – 224, 225, 226, 227, 228
 Mark Lockwood – 254, 255, 256, 257, 258
 Doug North – 331, 332, 381
 Robert Love – 394, 396, 397, 399, 400

JANUARY 2024 EVENTS

WOODWORKING SIG INTRODUCTION TO VENEERING WEDNESDAY, JANUARY 3RD – 6:30PM

The Woodworking SIG presents an *Introduction to Veneering* by **Terry Dote** at its January 3rd meeting. Veneering is simply a method for decorating the surface of one material with another more attractive material. It can produce some of the most remarkable effects in woodworking using techniques and a few hand tools that Terry will discuss at the meeting. This should be a great session so plan to be there!



TURNING SIG EVENTS EMBELLISHING YOUR PROJECTS TUESDAY, JANUARY 9 – 6:30PM

The Turning SIG brings **Robert Love** to the front what should be a great demonstration on *Embellishing Your Projects*. While primarily focused on turned projects, this session will cover a wide ranging selection of ways you can apply different tools and techniques to add interest and depth to your project.

The Monthly Challenge for the January meeting is a lamp using the information provided by Jim Yonkers in October.



Both sessions will be available as a hybrid session—both in-person and via Zoom. We hope many of you will join us in-person, handle your membership renewal, and bring your *Show & Tell* items. All members will receive a reminder with the Zoom link a few days before the events. Can't make it or viewing via Zoom but have projects to show? Send an email with photos and a description to woodcny@gmail.com by 3pm on the day of the event to be included in the slide show! Earlier is very much appreciated!

DEMONSTRATION LOCATION & INFORMATION

The Woodworkers, Turners & Scrollers demonstrations are held **In-Person** in the **Community Room at the Belgium Cold Springs Fire Dept Station One, 7920 River Road, Baldwinsville.** *Directions on page 29.*

When possible, we will also broadcast the demo via **Zoom** and distribute the link to members 1-2 days ahead. Our Zoom sessions open by 6pm

Show & Tell: Items accepted in-person. If you can't make it, send photos and descriptions of your projects to woodcny@gmail.com by 3pm on the day of the demonstration so they can be incorporated into the slideshow.

**ALWAYS
CHECK THE
WEBSITE FOR
THE LATEST
EVENT INFO**

Continued on Page 4

JANUARY 2024 EVENTS, *continued*

CARVING SIG—CARVING A ROSE, PART 1 THURSDAY, JANUARY 18TH—5PM-8:15PM

The Carving SIG will meet on Thursday, January 18th. Gathering will start at 5pm and we expect to start carving by 6pm. During this session, **Gary Morison** will work with attendees to *Carve a Rose*. This is a 3-part workshop, with more work to be done at the February 15th and March 21st meetings. Don't forget your *Show & Tell* items also.

Gary will also outline future plans for 2024 and discuss plans for the annual Harvest Festival in September. The Carvers meet in the large Community Room at the *Beaver Lake Nature Center, 8477 East Mud Lake Road, Baldwinsville, NY. Directions on page 31.*

CLUB WORKSHOPS

SATURDAY MORNING 9AM—NOON

JANUARY 13TH, FEBRUARY 17TH, MARCH 16TH

The Club holds monthly workshops generally on the Saturday after the Turning SIG demo/meeting. The workshop is held at the large garage at Charlie & Barbara's home, a location affectionately known as the *Eight Acres Event Center*. The garage includes a shop space that is heated where 7 lathes are housed and available for use by attendees. It also includes the club's scroll saw, Charlie's large Oneway lathe, and the wood stove. The outer, unheated area, houses the club's grinder for sharpening tools, Charlie's large band saw, a very large stash of wood available for purchase, a table with the club's consumables, and space to gather in warmer weather.

We welcome all members to attend, learn to turn, learn to scroll, learn to carve, and otherwise participate at workshops, even if just to chat! If a member wishes instruction on other topics, they can request it and if it cannot be handled on the normal workshop day, Charlie will work with them to schedule another time.

NOTE: Wood and consumables items can be purchased at *ANY time*. You do not have to wait for a workshop day. Contact Charlie at any time either at 315-720-7151 or 8acreswood@gmail.com to arrange a time to purchase whatever you need.

WHERE IS THE SHOP? The exact address for the club workshop is sent to all members by email before the event. It is located near the Northwest YMCA east of Baldwinsville.



NOTE:

If you signed out equipment prior to the holidays, all equipment needs to be returned prior to 9am on the day of the workshop. Contact Charlie to make arrangements.

MEMBERSHIP & RENEWALS

The Woodworkers of Central New York (WWCNY) continues to attract members from near and far. Since the New York State Fair, we've received new memberships from 25 people so our total membership is over 300! Within that 25 are 5 youth who we hope will actively attend meetings/demos, learn, and participate in our events.

Membership in the WWCNY runs from January 1 to December 31. Anyone who joins from October 1 forward automatically receives their membership for the following year. We do receive members throughout the year but do not prorate memberships based on when you join. The Board continues to keep the membership price reasonable at just \$25 for individuals and \$35 for families, with Juniors free (with an adult membership).

The Board realizes that many members used our online with PayPal option to renew/join in the past. Unfortunately, PayPal requires a member's social security number in addition to our Federal Tax ID # for our account. After this discovery, we cancelled that account. We are working on another option.

For now, we ask that you pay with either cash or checks, however, Barbara can use the Square account used for craft show sales if you want to use a credit card.

Renewals can be taken at any of the upcoming meetings, workshops, and other events. Or send a check by mail to the corporate address:

Woodworkers of CNY, 3405 Patchett Rd, Baldwinsville, NY 13027

BE SURE TO:

Either complete the 2024 membership application (on web) or include a note with your current email and phone number so we can update the records!

**DON'T MISS OUT ON INFORMATION ON EVENTS!
RENEW TODAY!**

**RENEWALS ARE
UNDERWAY**

**Due by March
31, 2024!**

Have a question about membership? Email woodcny@gmail.com with your question!

2024 NYS FARM SHOW DEMONSTRATIONS

The New York State Farm Show occurs each February and is held in 7 buildings on the New York State Fairgrounds. Club members provide woodworking demonstrations during all 3 days educating visitors about the club and woodworking our 300 square foot space in the Agricultural Museum where we typically demo during the NYS Fair. The 2024 shows is from February 22-24. There are several great reasons to help at this show:

- ◆ The event is only from 8:30am to 4pm!
- ◆ Parking is right by the building!
- ◆ We bring the electric lathes and scroll saw (plus the workbench is there)!
- ◆ No raffle, no selling tops—just good old fashioned demos!

Want to help? This is a FUN event for everyone since we can use the electrified tools. It is also a great opportunity to learn from other members! Volunteers are always accepted at woodcny@gmail.com. If sending an email, include when you plan to help and what you plan to do.



MIKE'S CORNER

CLICK IT OR TWIST IT

Mike Vecellio shares a variety of techniques he's learned with other members whenever possible. Here he talks about click pen mechanisms. *Your articles are welcome anytime.* Please send to woodcny@gmail.com.

Where Does Mike Buy His Pen Kits?

Mike's favorite place to buy kits is a website named [Exotic Blanks](#).

Why? Great service along with several kits with Schmidt mechanisms. [Plus usually some candy with each order!]

When I first started pen turning about 4 years ago, like most people, I started with a twist pen kit. Even Chubby Checker sang twist and shout, so how could I go wrong! I started with slimline pen twist kits. They are easy to turn, easy to assemble, and use a Cross pen refill.

Then I moved on to other twist pens especially the trimline kit. It is very similar to the slimline, only a little larger. Like most of the pen turners I know, I moved up to the Sierra twist kit. There are many varieties of this style, but they all use similar components. I stayed with this kit until my friends were asking me if I could make a click style pen.

I bought a few different click pen kits to try them out. My favorite, at the time, was the Gatsby click pen kit. I made quite a few of them and gave them out to friends. After a while some of my friends contacted me to say the click mechanisms were failing.

As it turns out the click mechanism is plastic and can wear out. Also, most click pen kits use a plastic clicker. I did some more research and found a few kits that use the Schmidt click mechanism.

The Schmidt click mechanism is an all-metal mechanism and is extremely durable. I have never had one fail, and I have made over 100 pens with this mechanism.

This mechanism comes in a few kits. I like the Slimline Pro EDC, the Sierra Super Button Click, and the Blade kit. Each uses a different form of the mechanism,

but they all have the all-metal mechanism which is made in Germany.

So, what did I do with the kits that had the cheaper plastic mechanisms that failed? I punched out the bad clicker, bought some Schmidt mechanisms, taped the end and threaded in the new clicker. A little adjustment making the refill a little longer and was back in business.

Figure 1 shows some of the pens I made that came with the Schmidt mechanism. Figure 2 shows the result of fixing a Gatsby kit with the better clicker along with the tap. I still make Sierra style twist pens, but for click pens, I use Schmidt.

So Chubby, I can *click and shout!*



Figure 1



Figure 2

WOOD EDUCATION — LIGNUM VITAE

One of the heaviest and hardest woods is **Lignum vitae** (*Guaiacum sp.*), also called guayacan or guaiacum or even **tree of life** or **wood of life**. Rod Castle showed a wizard wand made from it during our 2023 Woodworkers Challenge so let's learn some more about this wood.

The lignum vitae tree is small, rarely exceeding 30' in height. Diameters of 12" are common but on occasion they approach 30". Drying take several years due to its density but once dried the one is extremely stable.

Lignum Vitae is a diminishing resource, indigenous to the Caribbean (including Florida) and the northern coast of South America. It can be grown in full to part shade and can tolerate a wide variety of soil conditions. It is very compact and slow growing. It produces purple flowers resulting in small yellow and orange berries loved by birds.

The heartwood can range from olive to dark green/brown to nearly black, sometimes with a reddish hue. The color tends to darken with age, especially upon exposure to light. The sapwood is small in size and usually a creamy yellow.

The grain is interlocked and hard to plane. It has a fine texture that can be polished to a high luster due to the wood's high natural oil content. This waxy quality comes from the resins in the wood which can make up

to 30% of the wood's weight.

Lignum vitae is a difficult wood to work as it will ride over the top of jointer heads due to its density. Very sharp cutters are needed and it will dull cutters quickly. It is difficult to glue so use synthetic glues and avoid starved glue joints.

Janka Hardness: 4,390 lb (*estimated*)

Average Dry Weight: 78.5 lbs/ft³

Specific Gravity: 1.05, 1.26

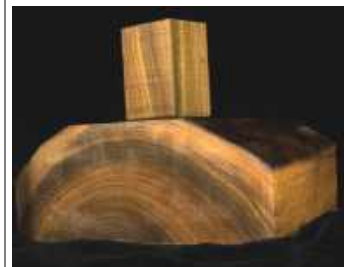
Tangential Movement: 8.7%

Radial Movement: 5.3%

Volumetric Shrinkage: 14.0%

Fun Facts:

- ◆ The national tree of the Bahamas and the Jamaican national flower.
- ◆ A favorite wood for pulleys and sheaves on sailing vessels as well as propeller bearings in ships from nuclear submarines to tugboats.
- ◆ Used as shaft bearings in hydroelectric plants due to its self-lubricating properties.
- ◆ Great as soles for wooden hand planes.
- ◆ Sometimes brewed into tea or as a herbal medicine used to treat symptoms of coughs, gout, arthritis, and syphilis.
- ◆ According to T. H. White's version of the Arthurian legend, *The Once and Future King*, Merlin's wand is made of lignum vitae with magical powers.
- ◆ American folksinger Pete Seeger fashioned the neck of his trademark banjo from lignum vitae.



FROM THE PRESIDENT



As we turn the calendar from 2023 to 2024, I want to reflect on some of the highlights from 2023 and take a look forward to 2024.

Our demonstrations ranged from the science behind dust collection to a history lesson on mountain dulcimers. We renewed our commitment to Beads of Courage—this time with a local contact at the Joslin Center which is an organization that works with children with Type 1 diabetes. This is a lifelong condition and our donations are welcome with open arms. We also raised \$2137 from our craft show sales that was donated to two deserving children-based charities and donated a bundle of toys to a local food pantry. As we have done for the past many years, we participated in the New York State Fair selling tops and raffle tickets but mainly talking about our hobby. We also gained a few new members that found us during The Fair.

The Board of Directors developed and approved a scholarship program for members that would be interested in working with a professional and then bringing that skill back to the club. We hope that we can inspire a couple of members to take advantage of this program so we can increase our pool of demonstrators.

2023 did present some challenges for the club. We temporarily lost use of the Firehouse for our meetings, so we had to move the Woodworking and Turning meetings to the Senior Center in Baldwinsville and the Scrolling meetings to Eight Acres. Mid-year, we were able to move back into Belgium Cold-Springs Firehouse, so things got back to normal.

Looking ahead, we are starting 2024 in January with Terry Dote giving a demonstration on the basics of veneering for Woodworking SIG while Robert Love gives us a demonstration on Embellishing Projects in the Woodturners SIG meeting. The Carving SIG is going to learn how to carve a rose just in time for Valentine's Day.

In February, in addition to our regular programs we will again be showing our crafts at the New York State Farm Show. This is a very relaxed event because we can use electric equipment and we don't sell anything. And, in May we will return to Maker Faire, this time held at the Fairgrounds.

In July, we are planning our next all-day club event at Eight Acres. I think everyone that attended in 2023 had a great time and learned a lot. We were able to demonstrate a number of different skills—everything from airbrushing to making shingles to chain saw carving. We expect to add some other features this year. As an example, Barb is working to get a blacksmith to demonstrate basic blacksmithing. We plan on participating in several craft shows again this year. We were disappointed that the weather did not cooperate, and we cancelled out of the Golden Harvest Festival. We hope to be back there again this year.

Although we have some programs scheduled, we still need your help, ideas for programs, and willingness to step up. We need to concentrate this spring building our craft show inventory and building more Beads of Courage boxes. We'd love to have you attend the Board of Director's meetings. They are open for everyone.

Please join me in saying THANK YOU to the members of the Board of Directors, Committee Chairs, and everyone involved with helping at events. I hope everyone has a safe, happy, and healthy New Year. See you soon.

Doug

UPCOMING EVENT

NWA SHOWCASE & TOTALLY TURNING

MARCH 23-24—SARATOGA SPRINGS CITY CENTER



The *Northeastern Woodworkers Association* – the woodworking club that covers eastern New York—holds a woodworking show each spring. Called the *Woodworker's Showcase*, 2024's edition will be the 32nd year for the event.

Several years ago, the NWA SIG called the *Adirondack Woodturners Association* moved their turning symposium, *Totally Turning*, from October to March to be held concurrently with *Showcase*.

For 2023, the dual event will be held **Saturday, March 23 and Sunday March 24** at the **City Center in Saratoga Springs**.

The events share a vendor hall as well as other City Center spaces. Each event has their own cost structure, speakers, and galleries. Both events are run by volunteers. Several of our club members attend one or the other event and will gather for meals on both Friday and Saturday evenings. Here are particulars on each event.

WOODWORKER'S SHOWCASE

Showcase admission includes entry into the vendor hall, the large gallery space, classes on numerous aspects of woodworking, kids toy building, pen turning class, and demonstrations. Demonstrators are not published as yet; however, Barbara Raymond-LaPrease will be one for 2024. The price of a ticket is \$15 at the door or presale via their website is \$17.95, with children 12 and under free. For 2024, they are offering group discounts for 15 or more adult tickets receiving a 10% discount.

The gallery is open to all – *including you as a WWCNY member* – as long as your project arrives by **6:45pm on Friday, March 22nd**. There are 23 standard categories in which you can

enter projects (*see right*). You **MUST** submit an entry form before March 21st to enter pieces in the gallery. Judging happens on Friday evening. *ORNAMENTS is the 2024 Challenge (details on the website)*.

TOTALLY TURNING

Admission to the woodturning-focused event called *Totally Turning* includes early entry each day into the vendor hall which includes their gallery space. More so, it includes admission to all 48 turning-based classes held in 6 different rooms over the two days from 8am to 5pm each day. *This is 8 more rotations than in 2023*.

The demonstrators for 2024 are Barry Gross, Mauricio Kolenc, Janice Levi, Mike Mahoney (remotely), Matt Monacop, Graeme Priddle & Melissa Engler, Derek Weidman, Karen Amodeo, and Joe Larese.

You also receive a T-Shirt with registration, coffee and breakfast service, and optional pre-order lunch. Demonstration rooms will have upgraded camera, projection, and sound systems.

The cost for *Totally Turning* is \$225 advance registration, \$245 with lunch option. Children 12 or younger are \$25. Online registration ends March 19th at midnight.

Lodging for Both Events

There are several hotels in the Saratoga area. Most attendees stay at *The Saratoga Hilton* to which the City Center is attached. The rate for 2024 is \$149 per night plus taxes & fees for a standard room. A link to the hotel website that includes the discounted rate can be found on both event pages.

NWA Webpage: woodworker.org

SHOWCASE GALLERY CATEGORIES

Accessory 1, 2, & 3
Adirondack
Alternative Materials
Boats
Carving 1, 2, 3, & 4
CNC-Laser
Furniture 1, 2, & 3
Intarsia
Jewelry
Pyrography
Scaled Models
Scroll
Shop Equipment
Toys
Wooden Instruments 1 & 2
Challenge—Ornaments

Descriptions of each category and the entry form can be found on the website [HERE](#).

TOTALLY TURNING GALLERY CATEGORIES

Bowls
Platters
Pens
Artistic/Jewelry
Spindle
Hollow Forms
Segmented
Alternative Materials
Novice
Master Division
2024 Special Category
— Spinning Tops

Descriptions of each category and the entry form can be found on the website [HERE](#)



**Make a Box &
Bring to ANY SIG
Meeting or Event**

**Turned, Scrolled,
Traditional Box,
Whatever!!**

**The folks at the
Joslyn Center are
desperate for
boxes. Please step
up and make one
or two (or more!).**



BEADS OF COURAGE BOXES

Beads of Courage is a non-profit organization that is dedicated to improving the quality of life for children and teens coping with serious illness, their families, and the clinicians who care for them. Children being treated for life-threatening illnesses are given beads as they undergo a variety of treatments. Boxes are one of the vessels in which they keep their beads.

The Syracuse Joslin Diabetes Center contacted the club requesting that our members make boxes for distribution to kids undergoing treatment for diabetes at the Center. They are looking for boxes of any type whether turned, scrolled, carved, or assembled using traditional woodworking. Members are encouraged to build and donate one or more boxes to fill the Center's urgent needs. Doug North, our president is managing our involvement in the program. Bring the completed boxes to meetings/other events or arrange for their receipt by Doug (dnorth@twcny.rr.com or 315-753-1121). We want to track and photograph each donated box.

There are some guidelines for size, finish, etc. We recently clarified the sizes so these are revised guidelines.

Wood Thickness & Weight:

- ◆ The boxes should not be heavy or bulky. Wall thicknesses should be ¼" to **not more than ½"**. Please, not super thin and delicate.

Dimensions:

- ◆ **Turned Boxes: Around 6x6" and not larger than 8x8"**
- ◆ **Flatwork Boxes: Not smaller than 6x6x3" and not larger than 8x8x3"**

Base & Lids:

- ◆ Box bases should be wide enough so the box is stable & does not tip over easily
- ◆ Lids should be easy for small or ill children to remove or lift.
- ◆ Any finials should be easy for a small child to grasp and not too elaborate so they don't break

Design Consideration:

- ◆ The boxes should be able to transition with the child into adulthood and be a keepsake for many years as the patients life with the diagnosis for a lifetime.
- ◆ Avoid excessively elaborate designs that may easily break or be damaged.
- ◆ If possible, incorporate one of the *Beads of Courage* beads into the box. See Barbara at any meeting to obtain one. The club purchased the beads

Finishes:

- ◆ Please use a safe, non-toxic finish.
- ◆ Do not use finishes like linseed oil that take a long time to outgas.
- ◆ Refrain from painting the boxes. Instead, highlight the beauty of the wood with clear varnish, a stain, and/or wood burning.

SAVE THE DATE – 2024 MAKER FAIRE

Plan Ahead Now!

The Club will be participating in the annual Maker Faire on **Saturday, May 4th**. The event will be held in the Horticulture Building at the NYS Fairgrounds. We will spend the day demoing, talking about the club, and in general showcasing our organization. Setup will be on Friday evening.

EDUCATIONAL SCHOLARSHIP

You may have heard mention that the Board of Directors was developing a *Train the Trainer Scholarship Program*. At their September 27th meeting, the scholarship form was finalized and we are ready to start rolling it out.

What Is It? It is a way for members in good standing to receive money to support their attendance at a training program of their choosing as long as they agree to return and provide club training. The member becomes a “subject-matter expert”.

What Do I Need to Do Once I Return? In order to receive the scholarship, you must present a club demonstration and/or workshop training others on what you learned. Additionally, you must provide a summary of the training that can be used in the newsletter.

How Much Money is Available? Upon review of the application, the Board will decide how much to fund for the course.

How Do I Apply? The draft scholarship form is available on the website under “Home/About/Forms”. There will be a notice on the homepage and link to the form.

Then What? The completed form MUST be submitted to the club email account – woodcny@gmail.com – at least 90 days before scheduled training. It will then be distributed to the Board of Directors for review. The Board will review at its next meeting. It is suggested that you submit well in advance of the training to ensure the review occurs.

How Do I Get Paid? You will be required to submit your payment request to the treasurer using the club’s *Reimbursement Form* (also on the website).



TOPS NEEDED!

Looking ahead to the 2024 NYS Fair, each year the club sells tops to the attendees as a fundraiser for a couple local charities. We sell enough that we need a stockpile of **600-700 tops!**

Tops can be turned, scrolled, or even made on a laser!

Don’t know how to make a top? Come to a turning workshop to learn! Charlie and others will be happy to show you! Here are three YouTube videos to check out: [Making a Top](#)

[Wood Magazine](#)

[Jason Geiser](#)

[Gwinnett Woodturners](#)

Mike Vecellio provides some great instructions for making tops in two of his past columns – [August 2020 & March 2023](#). Check those out!

Yes, tops can be scrolled also. Interested in patterns? Send a request to woodcny@gmail.com and Barbara will send you some.

Finishing? The buyers love it when you add color to plain tops. Magic markers work fine! Please no glitter!

What Do I Do With Them? Bring to any meeting or event. If you can’t make one, you can always drop them off at Eight Acres, just let us know you are stopping by!

**CHARITIES
WHO RECEIVED
PROCEEDS OF
2023 TOPS SALES**

*Sleep in Heavenly
Peace Syracuse*

Make-a-Wish CNY



SHOP TIME!

Shop Time is our column that brings you techniques that you can use in the shop. If you have some tips to share, please send to woodcny@gmail.com.

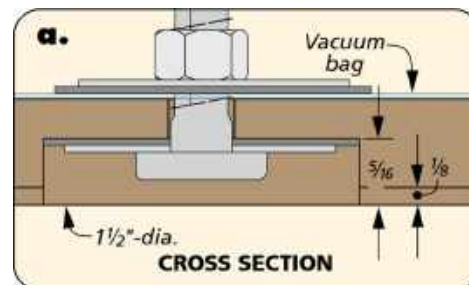
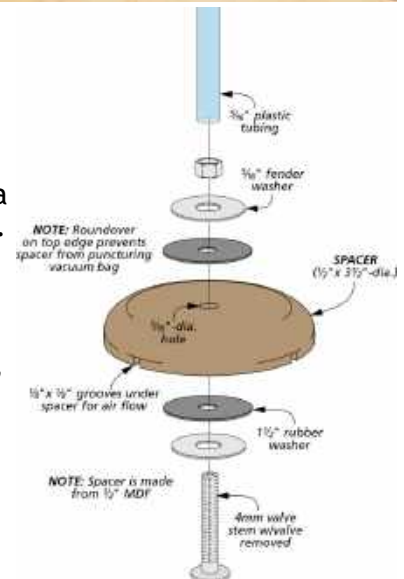
Budget Veneer Press

Our first demonstration this year is on veneering. If you want to dip your feet into veneering, you'll probably want a veneer vacuum press which can be expensive. Here is a low cost option to try.

From a local discount tool store (like Harbor Freight), you can purchase a Venturi-style vacuum pump for under \$20. Combine that pump with a roll of vacuum saver food bags and a handful of hardware to create your own press as shown below.

Make the hookup point for the Venturi pump out of a bolt-on tire valve (with the stem removed), a couple of rubber and steel washers, and a spacer. Before cutting the space to shape with a hole saw, drill a counterbore and cut grooves in the bottom face (detail "a").

Using the Press: Place the workpiece in the bag, fold over the end a couple of times, and clamp it with some scraps of MDF to make a seal. The Venturi pump is hooked up to an air compressor and it generates a vacuum, pulling the vacuum bag tight.



Curbing Router Burn

Do you get friction burn marks when rounding over edges of your projects? Well, with some species, such as cherry and maple, they will burn easier than others. Some ideas?

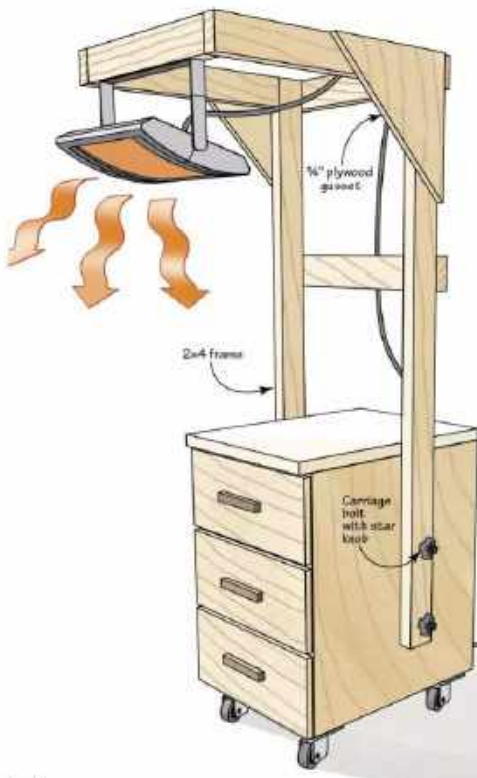
- ⇒ Use a quicker feed rate
- ⇒ Make sure your router bit is clean and sharp
- ⇒ If your router only has a single speed—usually around 25,000 rpm or faster—rout the profile in two passes, removing most of the wood the first time and then following-up with a quicker, shaving-thin pass.
- ⇒ If your router has variable speed, dial it back to about 18,000 rpm or so!

MORE SHOP TIME!

Mobile Heating Station

Is your woodworking shop in the garage? If so, the winter months can be tough. Why not build yourself a mobile heating station by attaching a radiant heater to a structure attached to a mobile cabinet. Securely mount it to the cabinet with carriage bolts, washers, and knobs on each side of the cabinet. Remove during the warmer weather!

Looking for carriage bolts, washers, and knobs? Have you ever been to **Hiawatha Fasteners** at 6312 East Taft Road? They have everything you need, and then some!



Bandsaw Clamp Corner Guards!



Whether you are assembling boxes, drawers, or furniture you'll want to protect the corners from the band clamps. Make your own from PVC pipe, cutting a 1" wide slot along the length of each piece. The slot allows the PVC to fit over the corners of the project without damaging them.



RECENT PROJECTS – DECEMBER 2023

With no meetings in December, we had no “official” Show & Tell photos. However, members passed along several photos of recent projects.



Bob Henry
9” x 10 1/4” Basket
5/8” Maple Layers with
walnut straps
Lacquer Finish
No Glue for Assembly
Made with Scrollsaw



Mike Vecellio
Granddaughter's New
Train



Mike Vecellio
Lamp
Beech
Wipe-On Poly

Jim Yonkers
Tool Boxes
Cypress
Lee Valley Toolbox
Ends ... [HERE](#)



Todd Reilly
Santa Face
Basswood



Ed Seigel
Segmented Bowl
Maple & Wenge
Mineral Oil &
Beeswax Finish



Barbara Raymond-LaPrease
Angel Place Card or Buffet Info Holders
Cherry
Danish Oil Finish

RECENT PROJECTS – DECEMBER 2023



Mike Bloomquist

Santa, Snowman, Greenwoman,
Greenman

THE WOODWORKING SHOWS

The Woodworking Shows is a live event that includes a variety of vendors, local clubs, plus education seminars coordinated by a vendor and held at various sites. We've attempted to get them to come to Syracuse and they were almost here in 2019 and then Covid. Their 2024 schedule is available on their website – www.thewoodworkingshows.com.

Currently, the following are listed as educators: Charlie Kocourek, Kevin Bedgood, Kathrina Nellis, Tracey Chevront, Bill Bush, Barry Gross, Dale Barnard, *Digital Woodcarver*, *Urbn Timber*, Frank Klausz (NJ only), Kurt Dobbins, and Bradley McCalister. There is a paid seminar each day; check the event website for details.

All events follow the same schedule.

Friday, 12pm–6pm; Saturday, 10am-6pm; and Sunday 10am-3pm

Some members attend the two events nearby:

West Springfield, MA at the Eastern States Exposition Center, 1305 Memorial Ave –**January 12-14**

Edison, NJ at the New Jersey Convention & Exposition Center, 97 Sunfield Ave – **February 9-11**

As each event nears, you will be able to purchase tickets online and see the vendors scheduled. Tickets at the door are \$16 (cash only) and presale online for \$14. Tickets are good for all 3 days. Children under 15 admitted free with paying adult. Active duty Military / Fire / Police with valid ID are admitted free.



Did You Attend a Show?

Please Write-Up Your Experience for the Newsletter

DECEMBER 9, 2023 WORKSHOP

We held a club workshop in December at the Eight Acres Event Center. It was a full house plus more as we had seven (7) lathes operating throughout the workshop. Everyone enjoyed themselves and learned a ton!



4 SIMPLE, NO-HINGE BOX TOPS THAT ROCK

An article from Wood online by Doug Stowe—Jan 20, 2021

The club hosted a 2-day workshop/seminar with Doug Stowe in October 2011. All who attended learned a bunch. Here, Doug presents some ideas for box lids you may want to consider. Remember, we are continuing to look for Beads of Courage boxes so consider using these tips to make one!



Box lids can be made as complex as you like, but you just can't beat the simplicity of lift lids requiring no hinges, locks, or stays. Doug Stowe specializes in crafting wooden boxes with lids and has developed a host of simple techniques for making your lids stand out. Try your hand at these four designs.

1. USE A SIMPLE SLAB

A top made from one piece of highly figured stock (*right*) can be as beautiful as a complicated multipiece design. Some craftsmen will warn that a wide slab of solid wood—particularly a highly figured one with lots of inherent stress—should be ripped and reglued to ensure it remains flat. But Doug says, "I'd rather take my chances with possible warp than disturb the figure with kerf lines."



To make this style top, begin by planing the stock to thickness. Doug planed the maple for this lid to 9/16" thick, jointed one edge, and then ripped and crosscut the lid to size—allowing for a 1/4" overhang on each side.

STOWE'S SUGGESTION:

A relatively thick top may feel heavy when opening the box, but resists warping better than a thin top.

With the top cut to size, cut rabbets in the lid's bottom face [*Photo A*] so it nests into the top edges of the box. Although Doug used a tablesaw with a tall auxiliary fence to cut the rabbets in this lid, given the large amount of material being removed, a router table and straight bit works, too, but may require multiple shallow passes.

Use a 3/16" round-over bit to break the lid's underside edge. Use a 1/8" bit on the top's edges [*Photo B*] and sand it to 220 grit. Apply a finish. Then, further embellish this simple top with an interesting or unusual pull. Doug found this one at the hardware store—sold as a kitchen cabinet pull. He liked its delicate appearance and how it fit the scale of the box.

STOWE'S SUGGESTION:

On a small box, a delicate pull works fine as a two-finger lift, but for larger boxes and heavier lids, a larger pull or a two-handed approach may make more sense.

2. INCORPORATE A RUSTIC ELEMENT

If you like the eclectic look of contrasting surfaces, try implementing a piece of roughsawn stock, such as this weathered red oak barnwood.

When preparing your stock, plane only one face, and reduce the thickness to 5/8". Then, cut the piece to size. In this case, Doug made the lid 1/4" smaller than the box's outside dimensions so, rather than overhanging the sides of the box, it nests within the box's perimeter. Next, cut a rabbet around the lid's bottom face [*Photo C*]. To lighten the look of this heavy



NOTE: All of Doug's designs have rabbeted edges, so the lids nest securely inside the box, and are finished with several coats of wiped-on clear Danish oil.



4 SIMPLE, NO-HINGE BOX TOPS THAT ROCK, P.2

top, tilt the tablesaw blade to 17°, attach a tall auxiliary fence to support the box top during the cut, and set the fence 5/16" from the blade to bevel the top's edges as you would a raised panel [Photo D]. Sand all but the weathered part of the top to 220 grit.

STOWE'S SUGGESTION:

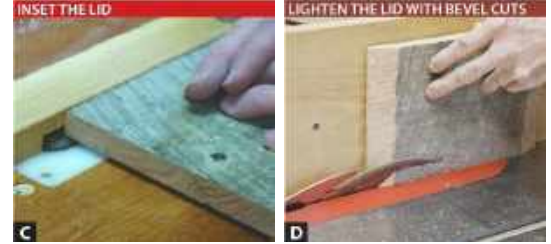
Use an extra-fine synthetic steel-wool pad to polish the roughsawn surface smooth to the touch without losing any of the patina. For this lid's handle, save time by using a stationary belt or disc sander to remove an equal amount of material from opposite sides of an inexpensive, round wooden drawer pull such as the one shown below, found at most home centers [Photo E]. Doing this gives it a handcrafted appearance. Secure the pull with a countersunk screw.

3. GET FANCY WITH A FRAME & PANEL LID

This design offers more woodworking challenges and plenty of visual details. Make the floating panel, splines, and lift tabs from a species that contrasts with the rest of the box (walnut and maple *shown*).

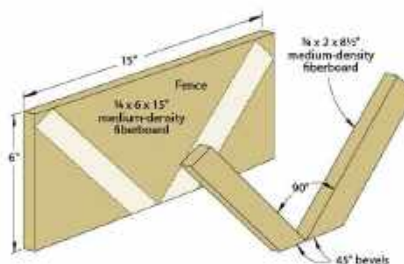
Begin by miter-cutting the frame pieces to length on the tablesaw [Photo F]. Dry-assemble the frame and tape the corners together. Measure inside the frame and add 3/8" to these dimensions to determine the size of the panel; then, cut it to size.

To make a tight-fitting tongue-and-groove joint between the frame and panel, set the saw blade 3/16" above the table and adjust the distance from the blade to the fence to equal the blade's kerf. Test your setup by cutting a kerf along the edge of two pieces of scrap stock. Check their fit [Photo G] and adjust the fence accordingly. Cut grooves along the frame's inside edges [Photo H]. Then, without changing the blade depth or fence location, cut matching grooves on all four edges of the panel. With the grooves cut, bevel the panel's face [Photo I] and sand the bevels to 220 grit. Then, glue the panel in the frame [Photo J]. After the glue dries, bevel the frame



4 SIMPLE, NO-HINGE BOX TOPS THAT ROCK, P. 32

Build the jig shown below and use it to cut centered kerfs for splines in the lid's corners [Photo L]. Set the blade height so it won't cut into the panel. Cut stock for splines to fit the kerfs, glue them in place, and trim and sand them flush with the top's edges. Then, rabbet the underside of the lid so it fits the inside dimensions of the box as was done with lids 1 and 2.



Rather than clutter this lid with pulls on top, Doug added walnut lift tabs at each end to indicate where to place hands when opening the box. To install these, first use a 1/8" spiral upcut bit in your router table to cut centered slots for the tabs [Photo M]. Then, cut 1/8 x 5/8 x 2" stock for the lift tabs and fit them to the slot [Photo N]. Glue the tabs in place and sand the entire top to 220 grit.



STOWE'S SUGGESTION:

Use a disc sander or bandsaw to give the tabs a simple pentagonal shape, emulating the bevels cut in the raised panel lid.

4. ROCK A STONE-ACCENTED TOP

As woodworkers, it's easy to think wood can be our only medium. But other materials—coins, seashells, or smooth stones, for example—add eye-catching contrast to woodworking projects.

To build this lid, Doug used two pieces of 3/8" thick stock: one sized to fit the box's inside dimensions (*the lid's base*) the other cut 1 1/2" longer and 1" wider than the box's outside dimensions (*the lid's top*). Arrange the stones on this larger piece; then hold each in place as you trace around it [Photo O].

STOWE'S SUGGESTION:

Snap a quick photo of the stones' orientation so you'll be able to position them exactly as you had them laid out originally following the cut.

Scrollsaw away the marked areas, cutting the lid's top into two pieces. Rout or sand a 1/16" chamfer on the top inside edges of the two pieces, and then glue them to the top's base. While the glue dries, create a template from 1/4" scrap to use when routing the handles. The single-sided template ensures identical handles centered on each end [Photo Q]. Finally, epoxy the stones inside their cutouts.



TOOL TALK Lathe Maintenance 101

Article by Judy
Ditmar from *Popular
Woodworking* online



Regular attention to a few simple procedures will keep you turning smoothly.

A lathe, like any other piece of woodworking equipment, is exposed to wood shavings, dust and other substances as well as general wear and tear. The bed, toolrest base and toolrest especially require regular attention for easy functioning. I can't count how many times I've watched people huffing and puffing, trying to slide a toolrest around on a lathe bed that is as rough as sandpaper (or as sticky as flypaper). Not to mention the number of times I've had to face such a lathe myself while doing demonstrations.

A poorly maintained lathe is no fun to use and can easily frustrate your efforts to achieve those lovely, clean cuts and smooth curves you so want your work to have.

Some very simple procedures, regularly done, will prevent such frustrations. How often you need to do these things will vary according to how much you turn and what kinds of things you are doing with the lathe. I generally clean and wax the bed, toolrest base and tailstock base; and I file, polish and wax the toolrest itself about once a week when I'm using that lathe every day.

If you are turning a lot of green wood, however, you should probably at least clean, polish and wax the bed each time you are done turning for the day. (A gunked-up bed is bad enough, but a rusty one is unforgivable.) If you turn only small items of dry wood and don't finish them on the lathe, you may need to do this only occasionally.

Less often, you will (or may) need to clean out electrical switches, adjust the alignment of the head and tailstock, make sure there is even pressure on all four feet of the machine, balance the handwheel and so on.

You should always read and make sure you understand any information or directions that came with your particular machine. There may be specific maintenance recommended for that machine that isn't mentioned here.

And last but definitely not least, don't forget to perform regular maintenance on your face shield. This essential tool isn't something you can buy and then use forever without further attention. The shield will become scratched, spotted and smudged over time.

While regular cleaning will certainly add longevity to your face shield, you'll need to replace it occasionally, so you can actually see all those wonderful things you are making as you turn them.



Continued on Page 21

1. I use this white board to provide a clean visual background while I am working, as well as to prevent any item I don't catch (as I part it off) from dropping behind the lathe where it would be harder to retrieve. The board is laminate glued to hardboard. Finish materials, paint and sometimes moisture from wet wood are all flung onto the board during turning, so it needs to be cleaned regularly. After cleaning, I apply a coat or two of paste wax to keep things from sticking to it.



2. The toolrest is subject to considerable abuse, and regularly develops scratches, dings and grooves. These irregularities interfere with the movement of the tool as it slides along the rest, and this will make turning accurately and cleanly more difficult.

Lathe Maintenance 101, p 2



3. Place the toolrest in a convenient position and lock everything down. Cover the bed to protect it from metal shavings, and file the top of the toolrest to remove the irregularities. Run the file along the front edge a couple of times too, or it will become quite sharp over time. I use rubber-bonded abrasive blocks to further smooth the rest; you can also use sandpaper. Then coat the toolrest with paste wax, allow it to dry and buff with a clean cloth.



4. The bed of the lathe quickly becomes scratched and covered with sap residue and finish materials, making it more difficult to move the toolrest.



5. Remove the tailstock and toolrest base. Polish the bed with rubber-bonded abrasive blocks or sandpaper (#180 grit is good, unless the bed is badly scratched or dinged) until it is clean and smooth.



6. Apply a thin coat of paste wax, allow it to dry then buff it smooth with a clean cloth. Two or three coats won't hurt, particularly near the headstock, where buildup tends to be heavy.



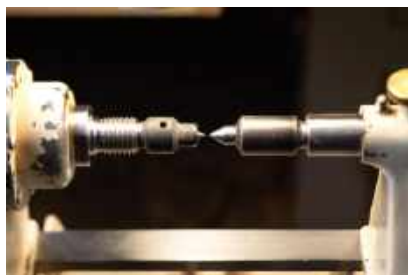
7. Clean out the Morse taper whenever you are going to insert a drive center (or live center, in the case of the tailstock). If you don't have a taper cleaner tool like this, you should at the very least blow any dust or other particles out of the opening.



8. If your lathe has a handwheel on the outboard side of the headstock, be sure it is running true; an unbalanced handwheel causes vibration while you are turning. This one was slightly off; a sliver of paper in the right location between the wheel and the flat it tightens against solved the problem.



9. Run the quill feed on the tailstock all the way out, clean off any debris and place a drop of oil on the spindle before retracting it.



10. Check to make sure the centers on the headstock and tailstock align properly. If they don't, follow the appropriate procedure for your particular machine to adjust them.

Lathe Maintenance 101, p 3



11. Keep belts properly tensioned. If they are too loose, the belts will slip too easily during turning; if they are too tight, the belts will wear out faster. Check for any unusual wear or fraying on the belts; if you see any, determine the cause and correct it before further damage occurs.



12. Some lathes provide a means for leveling. While it isn't necessary to have the bed of the lathe level, all four feet must have the same pressure on the floor to prevent wobbling. I do keep the bed of my large lathe level; it's handy sometimes to have a clean, flat surface in the shop that I know is level.



3. The bottom of the toolrest and the tailstock pick up debris and scratches, although not as quickly as the bed. Sand or polish, then wax as with the bed and toolrest.



14. This is the remote switch on my small lathe. It sits under the handwheel on the outboard side of the headstock, a location which is very convenient for me while turning, but which exposes it to a lot of dust. I find I need to clean it out occasionally. Don't forget to unplug the machine before opening the switch.

Make a Safe Small Miter Saw Cut

Cutting small parts on a miter saw doesn't have to be scary or dangerous. Here's a method that keeps your fingers well away from the blade and prevents the piece you're cutting from zinging across the shop.

First, make a zero-clearance table. It's composed of just two parts: a base and a fence. Make the base from a piece of 1/4" plywood that's a few inches wider than the turntable of your saw, so that your blade doesn't cut it in half. Make the fence from one piece of 3/4" hardwood that's about 2" wide.

Glue the fence to the base, then screw the table to both sides of the saw's fence. Usually, there are holes in the fence to allow this; if not, drill a couple. When the table is secure, turn on the saw and cut a kerf through both the fence and the base.

This zero-clearance table has a number of benefits. First, it shows you exactly where the saw will cut, which makes it much easier to position a stop block. Second, it backs up the workpiece. You'll get an absolutely clean cut on all four sides of the wood, without any splinters. And third, because the table's base is level and smooth, and the fence's gap is minimal, the pieces you're cutting will stay put.

You'll need one more essential item: a pinch stick. It's simply a 3/16" x 3/4" x 12" piece of hardwood. Drill a pilot hole about 1/4" in from one end, then run a screw through the hole so the screw's point extends about 1/4".

Use the stick—not your fingers—to hold the offcut. First, slide your part against the stop block. Place the screw's point on the part being cut off and the stick's other end against the stop block. Flex the pinch stick's center to hold the part in place, then squeeze the saw's trigger and cut. Always let the blade come to a full stop before lifting it back up.



Tip by Charles Mak
from *Popular*
Woodworking online

Preventable Fires

Every year about this time, there seems to be an uptick in house fires. Doug can attest to that in that between December 23rd and December 28th he's been to 9 fires as one of the local Red Cross volunteers aiding the victims.

Recently, Steve Good posted some tips on his blog about how to prevent fires that could start in your shop. This is a great time to inspect your shop using Steve's ideas as a starting point.

Most of the fires are preventable. Please take the time to do a safety check in your workshop.

- ⇒ Always store paint and other flammable liquids in their original labeled containers with tight-fitting lids. A fireproof metal cabinet can also be a good idea.
- ⇒ Never store propane cylinders indoors. They are sturdy enough to stay outside, and the risk of them catching fire indoors is just too great. Propane is highly combustible and a tank full of its can quickly cause a deadly explosion.
- ⇒ Always clean up any spill that occurs in the workshop.
- ⇒ Keep heaters maintained and in a safe location.
- ⇒ Store gas/combustibles in the correct containers recommended by the suppliers.
- ⇒ Do not smoke in the workshop.
- ⇒ Install a smoke detector in your workshop and ensure that a fire extinguisher is easily accessible in the event of a fire occurring.
- ⇒ A fire extinguisher is an essential item to have in your workshop. Know how to use it. If you don't, contact your local fire department to provide you with instruction.
- ⇒ Maintain wiring on your tools. Repair frayed wiring on the power cable. Do not overload power strips.
- ⇒ If you see black areas of obvious overheating, remove the power to that tool immediately. Repair the problem before further use.
- ⇒ Clean up piles of sawdust after every workshop project.
- ⇒ Do not throw oily rags into a trash can. Soak them in water and dispose of them outdoors in your trash container. Empty trash can often.

These are just a few suggestions. Do your safety check and look for potential problems. Act on the problems immediately. Losing your tools is bad enough. Losing your house is life changing. Losing your life is not repairable.



Don't Let This
Happen to You



YOUR HELP STILL NEEDED!

The June 2023 newsletter presented a strong request for help from the members to help keep our great organization going. We had some great response, especially from many of our newer members. Thank you for stepping forward to offer help. It is great to see so many members helping at each of the meetings since our request. Thank you. And, the emails of support and concern were lovely also.

Was that enough? **NOT REALLY**. We still need more members to come forward to help with not only the video system but also with many other tasks that happen in the club. the goal remains – **HAVE A GREAT CLUB WHERE EVERYONE LEARNS, HAS A GOOD TIME, AND THE WORK IS SHARED AMONG MANY, NOT JUST A FEW!**

What can you do? *Step Up to Help*

- ◆ **First & Foremost** ... Before you make derogatory comments or criticize something, think about what you did to help and think about what others have done to provide you with regular programs, activities, and a great local woodworking club where you can learn and interact with fellow woodworkers.
- ◆ Offer to help with the audiovisual system at meetings.
- ◆ Come early to meetings to help with room setup and/or stay after a meeting to help with clean-up.
- ◆ Offer to help with or even lead projects or other events.
- ◆ Offer to demonstrate on a topic. Not sure? Team up with someone else. All of the SIG Chairs are looking to fill their demo schedule! Here are their names and contact info:

Gary Morison, Carvers — (315) 327-9157

Barbara Raymond-LaPrease, Scrollers — (315) 345-5381

Mark Anastas, Turners — (315) 863-4483

Charlie LaPrease, Woodworkers — (315) 720-7151

- ◆ Help locate demonstrators and coordinate their demo for the club. Remember, there are 4 different Special Interest Groups and demos can be at any of them!
- ◆ Make tops for the Fair – Each year we need at least 500, preferably 600 or more. While we had enough for 2023, it is never to late to start on your tops for 2024. (*see page 11*)
- ◆ Make a Beads of Courage box for kids being helped at the Joslyn Diabetes Center. (*see page 10*)
- ◆ Make & donate product for the *Crafts for Charity* events (*page 28*).
- ◆ Help out at future *Crafts for Charity* event—setup, selling, demoing when appropriate, pack-up, etc.
- ◆ Provide content – articles, tips, etc. for the newsletter.
- ◆ Offer to be on the Board of Directors as an At-Large member or step up to be a SIG Leader or Officer.
- ◆ Offer to demonstrate at the NYS Farm Show (February 22-24) or at Maker Fair 2024 on May 4th.

WOODWORKERS OF CENTRAL NEW YORK

Membership in the Woodworkers of Central New York, Inc. is open to anyone interested in all genres of woodworking.



Membership covers all Special Interest Groups – Carvers, Scrollers, Turners, & Woodworkers. No additional fee is needed to participate in these Committees unless there is a workshop fee.

There are several types of members:

- ◆ Individual Membership: \$25
- ◆ Family Membership (all living at the same address): \$35
- ◆ Junior Membership (Ages 8-17): Free with adult membership
- ◆ One Day Membership: \$5
- ◆ Honorary Membership: Board Selection

Membership applications are available on the website www.woodcny.org.

Badges are an additional \$9 per person with a \$2 charge to mail the badge.

The Corporation leadership, with contact information, is listed right as a reference. Feel free to contact any club leader to ask questions, suggest programs, or deal with issues.

You should have an active email address if you are a member as the leadership sends many member communications via email as well as this newsletter. To read the newsletter you need to have a PDF reader product such as [Adobe Acrobat Reader](#) installed on your computer.

Adobe Reader is free. Due to its size, we prefer not to send newsletters by mail unless specifically requested.

The Woodworkers of CNY was formed in September 2017, to combine the three existing woodworking groups in Central New York into one consolidated entity. Four Committees of the Corporation (aka Special Interest Groups) focus member's attention on three specific genres—carving, scrolling, & turning—as well as the broader, all-encompassing general woodworking area. Members may attend any of the meetings at no additional charge (unless there is a project or speaker charge).

The Woodworkers of CNY was reaccepted as a chapter of the American Association of Woodturners (AAW) in May 2018. We encourage you to join AAW as it is an excellent organization with great resources as a member. Membership in AAW costs either \$56 for an online only or \$68 for a paper-based membership. Each membership includes the 6 issues of the journal, *American Woodturner*, with the online membership receiving it only online. You also have access to a large collection of online resources such as the publication *AAW Fundamentals* which is published on the off months from the journal.



AAW is an international organization of over 14,000 members of varying woodturning skills. In addition to receiving current issues of the journal, *American Woodturner*, membership also provides online access to all past issues of the Journal from 1986 forward. Access to a Resource Directory is also available only to members. Members of AAW also receive savings of up to 50% on AAW merchandise, including project books, DVDs, logo apparel, and more. Members can apply for an educational opportunity grant whereby an individual can receive compensation toward woodturning education for expenses such as tuition, registration, travel, lodging, meals, etc. They can also apply for professional outreach program fellowship grants to encourage creative growth or research, or to provide inspiration for new directions in turned wood art. The AAW Forum is also available to members as are other restricted articles and resources on the AAW website. Members receive a discount on registration for the annual Symposium which is in Louisville, Kentucky in 2023. Check out the AAW website - www.woodturner.org.

**Woodworkers of Central
New York, Inc.**
3405 Patchett Rd
Baldwinsville, NY 13027

Woodworkers of Central New York, Inc.

Leadership

[Doug North](#), President
(315) 753-1121

[Larry Prunotto](#), Vice President
(315) 652-3605

[Barbara Raymond-LaPrease](#),
Secretary (315) 345-5381

[Brad Rees](#), Treasurer
(315) 391-2723

Special Interest Groups Chairs

[Gary Morison](#), Carvers
(315) 327-9157

Barbara, Scrollers
(315) 345-5381

[Mark Anastas](#), Turners
(315) 863-4483

[Charlie LaPrease](#), Woodworkers
(315) 720-7151

At-Large Board Members

[Kerry Kopkey](#) (315) 593-6914

[Robert Love](#) (315) 297-4224

[Bruce Meissner](#) (315) 699-3671

[Rod Castle](#) (315) 638-2659

[Todd Reilly](#) (315) 263-3410

[Arlene Schlueter](#) (315) 720-6633

[Mel Taber](#) (315) 487-7855

[Paul Tennant](#) (315) 676-3469

Board Committees

Financial Oversight
Larry Prunotto (chair)

Charitable Giving
Susan Allen (chair)

Nominating
Chad Dawson (chair)

Web & Social Media
Robert Love (chair)

New York State Fair
Barbara Raymond-LaPrease
(chair)

Facebook
Todd Reilly

Newsletter Editor
[Barbara Raymond-LaPrease](#)



WE ESPECIALLY NEED

- Needle Boxes
- Whistles
- Pens
- Sea Urchin Ornaments
- Bird Houses
- Kitchenware esp. Ice Cream Scoops
- Screwdrivers
- Music Boxes
- Letter Openers
- Small Clocks

CHARITIES WHO RECEIVED PROCEEDS OF 2023 CRAFT SALES

Charity for Children

McMahon Ryan Child Advocacy Center

CRAFTS FOR CHARITIES – DONATIONS NEEDED

As stated earlier in the newsletter, the club supports local children’s charities by donating money made from the sale of crafts donated by its members at 3-5 locations yearly.

People ask what they can donate. Most anything is happily accepted. We received 4 music boxes before the Manlius Show and they were gone by noon on Saturday. Here are some of the typical items we are looking for in non-ornaments, scrolled, and turned. Carved? Always looking for items. Woodworkers ... Small boxes are one idea and I know there are others!

Non-Ornament Items:

Small Cars/Trucks/Planes, etc.	Small Vases/Weed Pots	Candlestick/Tea Light Holders	Ice Cream Scoops	Small Cutting Boards
Small Puzzles	Pens	Rattles	Wizard Wands	Magnets
Small Boxes	Small Clocks	Seam Rippers	Letter Openers	Screw Drivers
Light Pulls	Keychains	Ring Holders	Magnets	Yo-Yos
Small Bowls	Various Kitchen Ware	Magnifiers	Kaleidoscopes	Snowmen

Scrolled Ornaments: Most any ornaments are welcome. We have plenty of smaller flat crosses. We need a variety of flat scrolled ornaments like:

Angels, Santas, Elves, Snowmen, & Other Holiday Related	Transportation Images like Trains, Planes, Cars	Service Groups like Firemen, Policemen, EMS, & All Military Branches
Birds like Hummingbirds, Cardinals, Eagles, Owls, Penguins, Chickadees, etc.	Fish, Bugs, Ladybugs, Butterflies, Flowers, Trees (Palm Tree), Other Flora, Whales, Shark, Octopus, etc.	Animals like Horses, Dogs, Cats, Elephants, Lions, Bears, Koala Bears, Hedgehogs, Dinosaurs, Dragons, Tigers
Sports esp. <i>non-standard</i> ones like Lacrosse, Snowboarding, Cycling, Wrestling, Volleyball, Ballet, Dance, Fencing, Sailing, Field Hockey, Crew, but also Baseball, Basketball, Football, Soccer, Field Hockey, Cycling, Hockey, Skiing, Running, Golf, Gymnastics, etc.		

Turned Ornaments – Here are a few ideas:

Sea Urchins	Hollow Balls with Finials	Bird Houses <i>You Turn We Will Add the Bird!</i>
Angels	Light Bulbs of Multiple Sizes	Small Lighthouses
Drums, Bells	Trains	Snowmen of All Types & Shapes <i>Can Stand Alone or Hang as an Ornament</i>
Lollipops	Ice Cream Cones	Acorns, Mushrooms
Gnomes/Gonks	Trees—regular & windswept	Sleds with People On

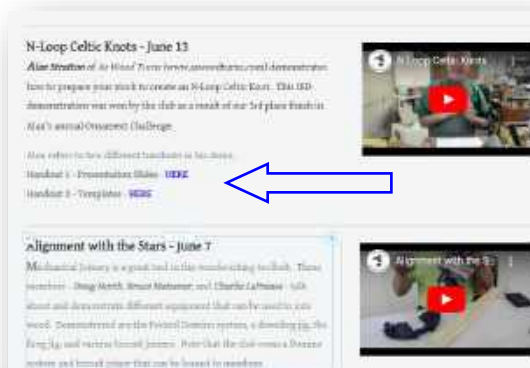
Holiday-Related Items – We need multi-piece nativity scenes. We need larger crosses (6-12”) and have plenty of smaller ones. We need angels. We could use items depicting the 12 days of Christmas, esp. *Partridge in a Pear Tree*. We only have dreidels for patrons of the Jewish faith.

Making Small Toys? Consider leaving them unfinished and providing a cheap paint set or crayons for the kids to decorate their own!

VIDEOS OF PAST DEMONSTRATIONS

One of the benefits of your membership being able to access videos of past demonstrations. While they are housed on YouTube, you can only access these videos from the *Member Only* section of the website using a password that changes yearly on April 1st.

The videos are arranged by year and month with a page for each year and links from year to year. A brief summary of the video is provided and any documents related to the video are linked right on the page (see sample right).



How can you find a past video? On the *Member Only—Videos* landing page, there is a table that identifies the available videos (see right). It is organized by month and Special Interest Group

September 2020	Marbling & Milk Paint with Barbara Rzymowiak-Lafosse [Video Currently Unavailable]	Small Covered Boxes with Embellishments with Chud Duvosec	none
October 2020	Turning an Antique Peppermill with Rod Currie	German Ring Turning with John Maderzi	Scrolling Basics with Barbara Rzymowiak-Lafosse
November	Power Tool Safety - The Table Saw & Miter Saw	Turning a Small Hat	Scrolling Next Steps

sponsoring the demonstration. It is fully searchable within your web browser! With the page open, press the key combination of **CTRL F**. A box will open along the top of the page and you can type in the topic.

Remember, you must have the current password to access the *Members Only* area. It's been sent out with the "News" items in the past. If you don't have it, send a request to woodcny@gmail.com for the current password.

SENDING PHOTOS

We love photos of your projects! We use them for this newsletter, for the online *Show & Tell*, for our website, and for our club slide show.

HOW DO YOU SEND PHOTOS? HERE ARE THREE (3) WAYS:

Send the Photo by **Email** to the club email: woodcny@gmail.com. Add any additional information in the email that tells others about your project.

Text the Photo to Barbara's cell (315-345-5381) along with information. Remember, be sure to identify yourself!

Got Lots of Photos? Use a free product called **WeTransfer** [here](#) to send multiple photos. You can also use the *WeTransfer* app from your phone.

WHAT ELSE SHOULD I SEND WITH PHOTOS?

With your photos, please send information about the projects shown in the photos – a brief description that should include wood used, finish, and any other information that makes it unique, even stories about the photos.



Need Sandpaper or Other Supplies?

Call Charlie to Schedule a Time to Visit Eight Acres to Purchase or Come on Workshop Days



CORPORATION SUPPLIES, LOANS, & SALES

We added some project kits to our inventory—**Pizza Cutters, Ice Cream Scoops, Bottle Openers.** We are hoping you will purchase the kits in sets of 2—You buy one for yourself and one that you make and donate to the club for our *Crafts for Charity* sales.

CONSUMABLES FOR SALE:

- ◆ **White Abrasive Pads** (1200-1600 grit) [for applying finishes like Osmo] \$2 each
- ◆ **4 x 1/4" Pan Head Screws**—perfect for use with sawtooth hangers—Bag of 20 for \$1.25
- ◆ **Sawtooth Hanger**—9/16"x5/16" or 7/8"x5/16"
 - ◆ Bag of 10 for \$0.50
- ◆ **Miniature Drill Bits**
 - ◆ 1/16" (#52), 3/64" (#56), & 1/32" (#68)
 - ◆ 10 per package—\$6.50 per package
- ◆ **Drill Chuck Adapter for Miniature Bits**
 - ◆ \$11 each
- ◆ **Screw Eyes**—bag of 100 is \$1
- ◆ **Carborundum Sandpaper Sheets**
 - ◆ 80, 100, 120, 180, 240, 320, 400, 600, 800, and 1000 grit
 - ◆ \$1 per sheet or 6 sheets for \$5
- ◆ **Carborundum Sanding Pads—\$2 per pad**
 - ◆ Grits – medium (120-180), fine (320-400), superfine (500-600), ultrafine (800-1000), & microfine (1200-1500)
- ◆ **Sanding Discs from Woodturners Wonders**—bags priced
 - ◆ Purple in 1", 2" or 3"
 - ◆ Wonder Weave in 2" or 3"
 - ◆ Green Wave Oversized in 2"

- ◆ Packaged in bags or 5 of lower grits: 60, 80, 120, 180, 240, 320, 400, & 600 or higher: 800, 1200, 1500, 2000, & 3000
- ◆ **Sanding Pad Holder Kits & Rolac Kits**
 - ◆ 2" & 3" sizes—bags priced
- ◆ **Anchor Seal**
 - ◆ Seals end grain of green wood to encourage slower drying
 - ◆ **\$12 per gallon jug** New Price 4/1/2023
 - ◆ Available at meetings if you call Charlie LaPrease (315-720-7151) one day ahead
 - ◆ Also available at Eight Acres by appt.

NOTE: All prices include sales tax which the Corporation pays on an annual basis to New York State.

TOOL LOAN PROGRAM

The Corporation owns a variety of equipment that members can borrow of a **maximum of one (1) month** at a time. This program is a way for beginners—or even seasoned woodworkers—to experiment with tools before purchasing. Some tools are stored at the Eight Acres Workshop while others, like the carving tools, are not. If you have an interest in borrowing tools, please send an email to woodcny@gmail.com. Your request will be directed and answered as appropriate.

With recent donations by members, we are expanding our collection of traditional tools and will be making more of those available for loan or even use at Eight Acres during both workshops and times scheduled with Charlie. Need something? Please ask!

SHARPENING SERVICES

Where can you get table saw blades and other tools sharpened?

Ken of All Around Sharpening Services is located in Jordan but you can drop off your items for sharpening at the Baldwinsville Supply which is at 82 East Genesee St (aka Rt 31, just east of the railroad tracks). Ken's cell phone is (315) 689-3184. Email is sharpeningguy@twcny.rr.com.

Paul E. Hart runs a service at 118 Fish Road, Mexico, NY 13114. The phone number is (315) 936-1880. Drop box at new address but picks up blades, etc. at Wiley Lumber & Doow Lumber in East Syracuse as well as Tracy Lumber & Ace Hardware in Fayetteville.

AMERICAN ASSOCIATION OF WOODTURNERS

WHY SHOULD I JOIN?

You enjoy woodturning and want more. Your club, the Woodworkers of Central New York, is a chapter of the American Association of Woodturners – AAW. What does that mean for you as a member of our club?

AAW offers the club officers access to a variety of resources from the AAW to help manage the club, including a negotiated reduced price for our corporation's liability insurance. We pay nothing else to AAW to be a chapter.

So what's in it for you? There are many great tools available to you as a member of AAW. You can explore the AAW website to learn about all

the resources you receive with your membership. Two of the biggest is the bi-monthly journal, *American Woodturner*, and the online only product, four issues of *Woodturning FUNDamentals*.

What's the Cost? \$68 per year

That's the cost if you want to receive a physical journal. If not, pay \$56 per year.

For each family member (associate), you pay an additional \$5.

Students aged 10-25 pay just \$34 annually for their membership

Join Today [here!](#)



IN-PERSON WOODWORKING CLASSES

We are listed a few of the "local" craft/woodworking schools that hold classes on a variety of topics. As usual, checking a organization's website and/or calling the is the best way to verify class availability.

Adirondack Folk School

Lake Luzerne, New York

www.adirondackfolkschool.org

Appalachian Center for Craft

Smithville, Tennessee

www.tntech.edu/fine-arts/craftcenter

Arrowmont School of Arts & Crafts

Gatlinburg, Tennessee

www.arrowmont.org

Connecticut Valley School of Woodworking

Manchester, Connecticut

schoolofwoodworking.com

Florida School of Woodwork

Tampa, Florida

schoolofwoodwork.com

John C. Campbell Folk School

Brasstown, North Carolina

folkschool.org

Marc Adams School of Woodworking

North Franklin, Indiana

www.marcadams.com

Pocosin Arts School of Fine Craft

Columbia, North Carolina

pocosinarts.org

Snow Farm / The NE Craft Program

Williamsburg, Massachusetts

www.snowfarm.org

The Woodright's School

Roy Underhill's school

Pittsboro, North Carolina

www.woodwrightschool.com

The Woodworking School at Pine Croft

Connected with Berea College; the former Kelly Mehler school

Berea, Kentucky

pinecroftwoodschoool.com

Do you know of other schools?

Please send the information to woodcny@gmail.com.

CLASSES, EVENTS, & SYMPOSIUMS

REGIONAL CLUB ACTIVITIES



Finger Lakes Woodturners

Meetings of the Finger Lakes Woodturners are a combination of in-person and remote demonstrations. They generally hold their meetings on the 3rd Thursday of the month and events are held in the shop space at **St. Michael's Workshop, 691 St. Paul St, Rochester**. Their website is: [Here](#).

Their next event is an IRD (interactive remote demonstration) by Mike Peace on Turning a Chess Set on the evening of December 21st. The event can be attended via Zoom for members or in person

Coming up – March 22-26, an in-person demo and workshops with Laurent Niclot.



Rochester Woodworkers Society

The Rochester Woodworkers Society host a variety of events on an ongoing basis with their national meetings held in the auditorium of Basil Hall at St. John Fisher University. Go to their website [RWS Website](#) has more info.

Their next *national meeting* is a talk by [Rusty Tchernis](#) on *Windsor & Ladderback Chairs*. The session will be held on [January 19th](#) at 7:30pm There is a workshop on Saturday but no details on their website.



Genesee Valley Woodcarvers

The Genesee Valley Woodcarvers meet on the 2nd Monday of the month at the 40 & 8 Club, 933 University Ave, Rochester. Their next meeting is January 8th. Check their website for more information and to join, etc. – [GVW website](#)

OTHER EVENTS OF INTEREST

Tennessee Assoc. of Woodturner's 35th Anniversary Symposium

January 26-27, Marriott Hotel, Franklin, TN

Website: [here](#)

Florida Woodturning Symposium

February 16-18, RP Funding Center, Lakeland, FL

Website: [here](#)

Wonders in Wood, Woodcarving Show, Sale & Competition

March 9-10, 2024, Millersville University, Millersville, PA

Website: [here](#)

Northeastern Woodworkers Association Showcase & Totally Turning

March 23-25, 2024, Saratoga Springs City Center

Website: [here](#)

American Association of Woodturners (AAW) 2024 Symposium

May 23-26, 2024, Portland, OR

Website: [here](#)

Northeast Woodcarvers Roundup

July 19-24, Cherry Ridge Campsite, Honesdale, PA

Website: [here](#)

Mid-Atlantic Woodturners Symposium

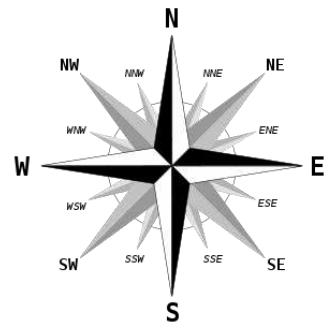
September 20-22, 2024, Marriott, Lancaster, PA

Website: [here](#)



DIRECTIONS TO EVENT LOCATIONS

Always check the website to identify the location of events. It has the latest information. Club Workshops are held at the *Eight Acres Event Center*, a private home near the North Area YMCA, east of Baldwinsville, NY. The address is available by request: woodcny@gmail.com



CARVERS DEMONSTRATIONS/EVENTS

The Carvers meet in the large Community Room at the [Beaver Lake Nature Center, 8477 East Mud Lake Road, Baldwinsville, NY.](#)

The Nature Center is located west of the Village of Baldwinsville and west of Route 690 North. Mud Lake Road is about 1 3/4 miles west from the 690 exit ramp for Route 370. There is an animal hospital just past Mud Lake Road across the street. The entrance to the park is about 1/3 of a mile from your turn onto Mud Lake Road.

The entrance is on the left. Follow the roadway in, wait for the traffic arm to raise and park in either of the lots. Walk to the main building, enter, turn right, and then right again into the large room.

After meetings end, your will exit by the same roadway. If the traffic arm is down, buzz the desk and tell who answers you are with the carvers. They will lift the gate for you to drive through. There is no charge for parking.

WOODWORKING, TURNING, & SCROLLING, ETC. DEMONSTRATIONS/EVENTS

For any demonstrations and/or events held in the [Community Room at Station 1 of the Belgium Cold Springs Fire Department, 7920 River Road, Baldwinsville, NY...](#)

The **fire station** is located southeast of Baldwinsville just south of the intersection of three roads—River Road, Hicks Road, and Patchett Rd.— off River Rd.

If you take Rt 370 north from John Glenn Blvd, River Rd is the first right after going across the bridge. The firehouse is 2 miles from that turn. You can also go to the traffic light on Rt 370 which is Hicks Rd, and make a turn onto Hicks (head up the hill).

If you are coming from Rt. 31, take a left onto River Rd (on the west side of Belgium Bridge), and head south about 2 miles past the new YMCA.

Please be aware that when attending meetings or events at the firehouse, DO NOT park on the grass or in front of the firehouse bay doors, or park such that others cannot enter the parking lot. If there is an alarm, the firefighters will drive right over your vehicle if it is in the way. The septic system is in the grassy areas. There is plenty of street parking. The Community Room entrance is on the **north** side of the building.

**Do Not Drive or
Park on the Grass!**

*Schedules subject
to change*

MEETINGS SCHEDULES

WOODWORKERS SIG SPONSORED DEMOS—2024

Date	Topic	Demonstrator/Speaker
January 3rd	Basics of Veneering	Terry Dote
February 7th	The Little Red Wagon	Jim Yonkers
March 6th	Using the Club's Akeda Dovetail Jig	David Wheat
April 3rd	TBD	
May 1st	TBD	
June 5th	TBD	
July 10th	TBD	
August 7th	TBD	
September 4th	TBD	
October 2nd	TBD	
Saturday November 2nd	18 th Woodworkers Challenge <i>All Members Plan to Participate in this Annual Competition!</i>	
Sunday, December 8th ^d	Holiday Event & Annual Meeting — One Party for All Members	

NOTE:

The date for
the Annual
Woodworkers
Challenge is
TENTATIVE

TURNERS SIG SPONSORED DEMOS—2024

Date	Topic	Demonstrator	Challenge
January 9th	Embellishing Your Projects	Robert Love	Make a Lamp
February 13th	TBD		
March 12th	TBD		
April 9th	TBD		
May 14th	TBD		
June 11th	TBD		
July 9th	TBD		
August 13th	TBD		
September 10th	TBD		
October 8th	TBD		
Saturday November 2nd	18 ^h Woodworkers Challenge <i>All Members Plan to Participate in this Annual Competition!</i>		
Sunday, December 8th	Holiday Event & Annual Meeting — One Party for All Members		

MEETINGS SCHEDULES

CARVERS SPONSORED DEMOS/CLASSES—2024

Date	Topic
January 18th	Carving a Rose, Part 1 with Gary Morison
February 15th	Carving a Rose, Part 1 with Gary Morison
March 21st	Carving a Rose, Part 1 with Gary Morison
April 18th	TBD
May 16th	TBD
June 20th	TBD
July 18th?	TBD
August 15th	TBD
September 19th	TBD
October 24th?	TBD
Saturday, November 2nd	18th Woodworkers Challenge <i>All Members Plan to Participate in this Annual Competition!</i>
November 21st ^h	TBD
Sunday, December 8th	<i>Holiday Event — One Party for All Members</i>

Schedules subject to change

NOTE:

The date for the Annual Woodworkers Challenge is TENTATIVE

SCROLLERS SIG SPONSORED DEMOS—2024

Date	Topic	Challenge
February 21st	Compound Cutting	Ring Basket / Bowl
April 17th	3D Puzzles	Compound Cut Projects
June 19th ^t	Layered Projects	3D Puzzle
September 18th	TBD	Layered Project
October 16th	TBD	
Saturday, November 2nd	18th Woodworkers Challenge <i>All Members Plan to Participate in this Annual Competition!</i>	
Sunday, December 8th	<i>Holiday Event & Annual Meeting — One Party for All Members</i>	

CLASSIFIEDS

FOR SALE: FIGURED HARD MAPLE BOARDS — Approximately 110 board feet of figured hard maple (striped and Birdseye, intensity of figure ranges from moderate to strong), 6/4 & 8/4, 4ft.-8ft.lengths. Wood has been stored indoors for up to thirty-five years. Most of the boards are completely defect-free and all have recently been inspected for possible powder post beetle damage. Sold only as a single lot, \$800 (approx. \$7.25 per bd.ft.), local pickup. Please call Barry Gordon at 315-857-4179, 10:00AM-7:00PM any day.

FREE—Old Rockwell-Delta Floor Model Drill Press with 1/2" chuck in working order. Call Clarence (Fibber) Magee @516-524-1382 or at fibber.magee@gmail.com. Located outside of Greene, NY. *Going to junk if no one wants!*

FREE— 8 Foot Long T2 Single Pole Fluorescent Tubes (Qty 12) - Used but still working. Contact George Lorefice at 315-427-1623 or loreficegj@gmail.com

FOR SALE—Grizzly 2HP Canister Dust Collector—steel impeller. \$400. Contact Kevin Rawlings at hostaguy@gmail.com

FOR SALE—General 3HP Shaper Model 40-250 (220V) with accessories. Original owner. \$1500. Contact Rick Simmons at rick2859@yahoo.com or 315-876-8338

WANTED—DRY, Live Edge Hardwood Boards. Minimum size of 5 inches wide, 12 inches long, and at least 1½" thick. Wider and longer the better. Contact Mel Taber at (315) 487-7855 or mtaber3@gmail.com.

FOR SALE — Used bench vises. Good quality, commercial grade. Price \$50 to \$75 each. For more info, email **Bud Millis** at (315) 297-7525 or emillis@twcny.rr.com

FOR SALE — LUMBER – Kiln & Air Dried Hardwoods (PA cherry, chestnut, maple, white oak, butternut, etc.) & some softwoods available. Also Black Walnut and English Walnut slabs available. Contact **Bud Millis** at (315) 297-7525 or emillis@twcny.rr.com.

Classifieds are welcome with the caveat that people notify the editor when entries are sold.

** MEMBER OF CLUB

Also, see various offerings by members in the classifieds above as well as the links on the Wood ID & Suppliers page on the website.

AREA LUMBER SUPPLIERS

Custom Hardwood Lumber Co. 8633 State Route 104
Hannibal, NY 13074
(315) 564-3101 Facebook link [here](#)
Customhardwoodlumber@gmail.com

Dexters Woodshop
6949 Kingdom Rd
Memphis
(315) 456-8271

Logs to Lumber
720 Church St, Baldwinsville
(315) 678-2151

Memphis Hardwood Lumber
6535 Church St, Memphis (315) 689-3949
www.memphishardwoodlumber.com

Lakeshore Hardwoods **
266 Manwaring Rd., Pulaski (315) 298-6407
191 West Main St, Victor (585) 869-5118
www.lakeshorehardwoods.com

Kennedy Hardwood
1939 Clark Rd., Preble (607) 749-7890
www.kennedyhardwood.com

Liverpool Lumber Company
201 North Willow St., Liverpool
(315) 457-2220
liverpool-lumber.com

Pittsford Lumber
50 State St., Pittsford (585) 586-1877
www.pittsfordlumber.com

Tracy Lumber [B.H. Tracy & Sons]
550 East Genesee St., Fayetteville
(315) 637-3174
www.tracylumber.com

Willey Lumber Company
100 Hartwell Ave, East Syracuse
(315) 437-3344
www.willeylumber.com

Johnson Brothers Lumber
2550 Ballina Rd, Cazenovia (315) 655-8824
www.johnsonbrotherslumber.com

Salt City Woods, Mill & Kiln
715 Old Liverpool Rd — In Back
Liverpool, NY 13088
(315) 952-1692
derby@saltcitywoods.com
saltcitywoods.com

Brown Dog Wood Products
1379 County Route 4, Central Square
315-243-8358
www.Browndogwoodproducts.com