

The background of the entire image is a close-up, high-resolution photograph of a wood grain. The grain is characterized by deep, wavy, and flowing lines that create a sense of movement and texture. The color of the wood is a warm, golden-brown, with some darker and lighter variations that highlight the natural patterns of the timber. On the right side of the image, there is a dark, solid-colored rectangular area that serves as a backdrop for the text.

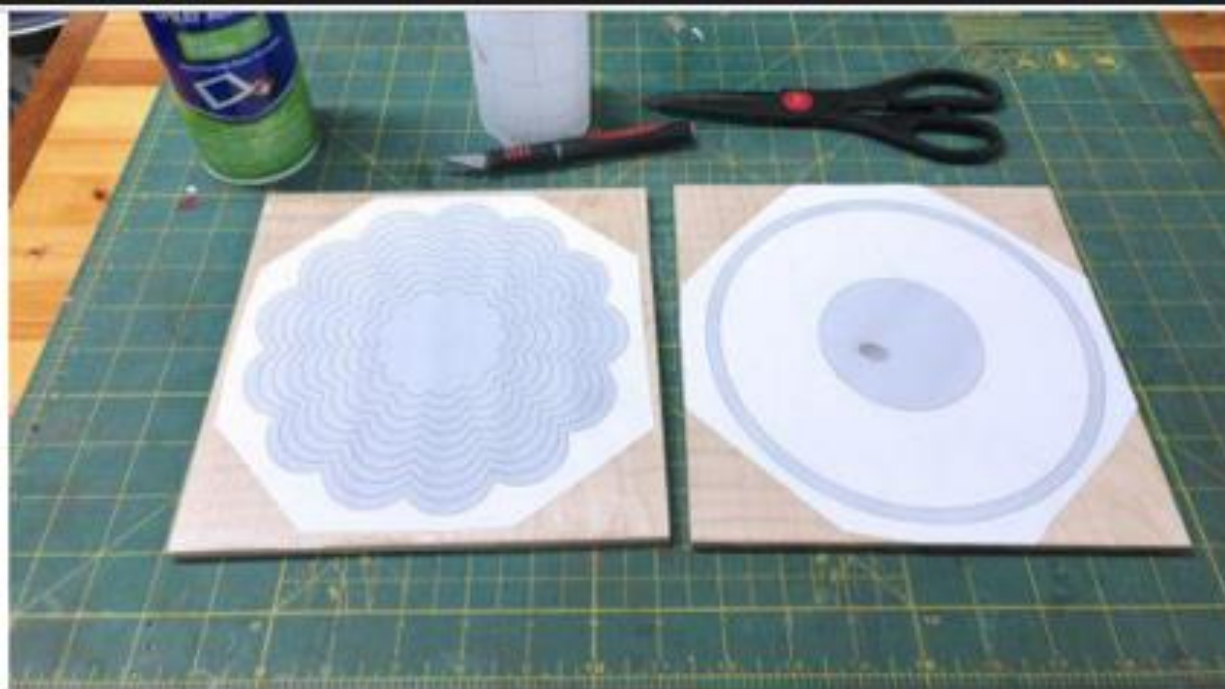
Ring Baskets

Woodworkers of Central New York

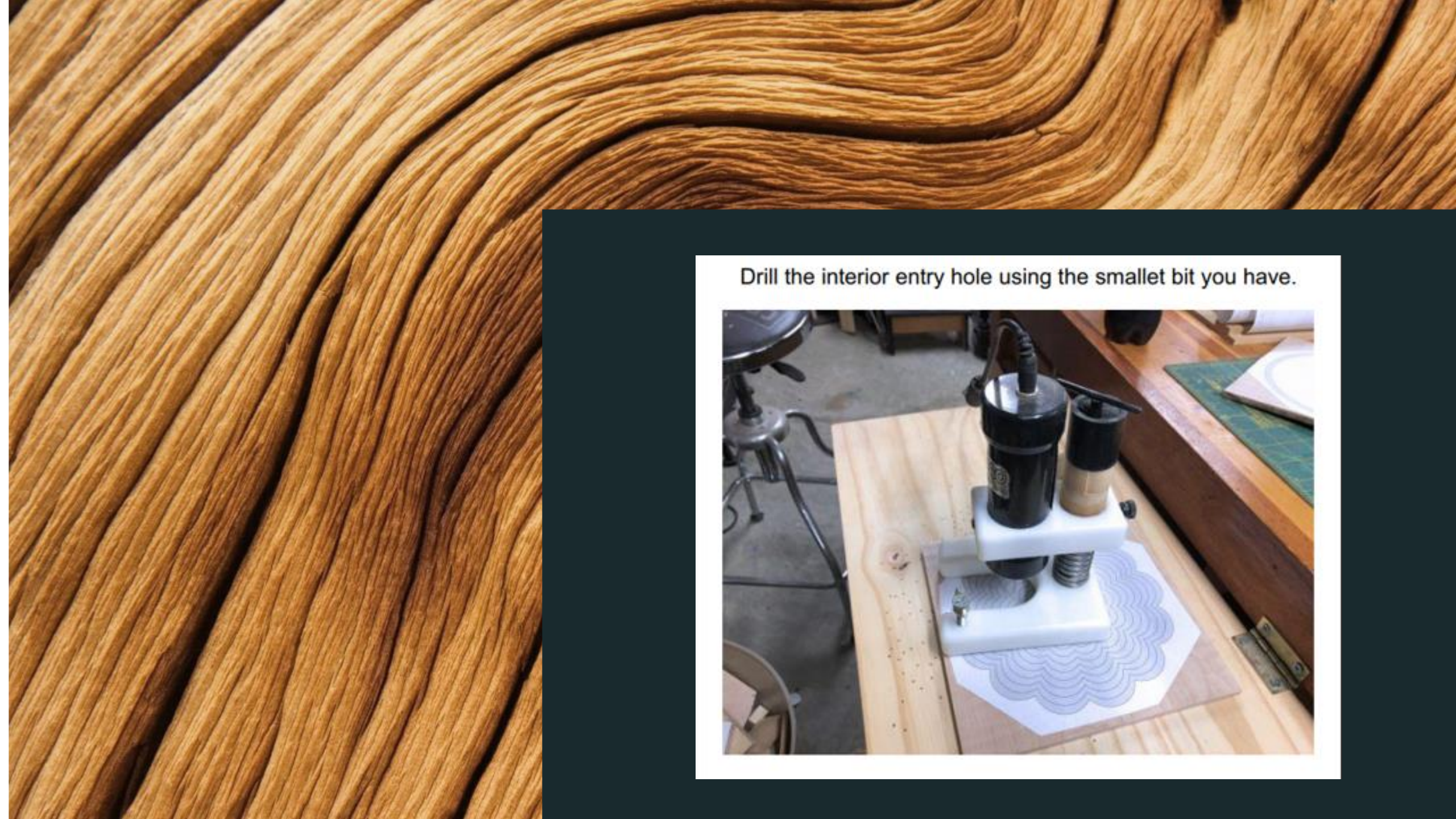
Spiral Basket.



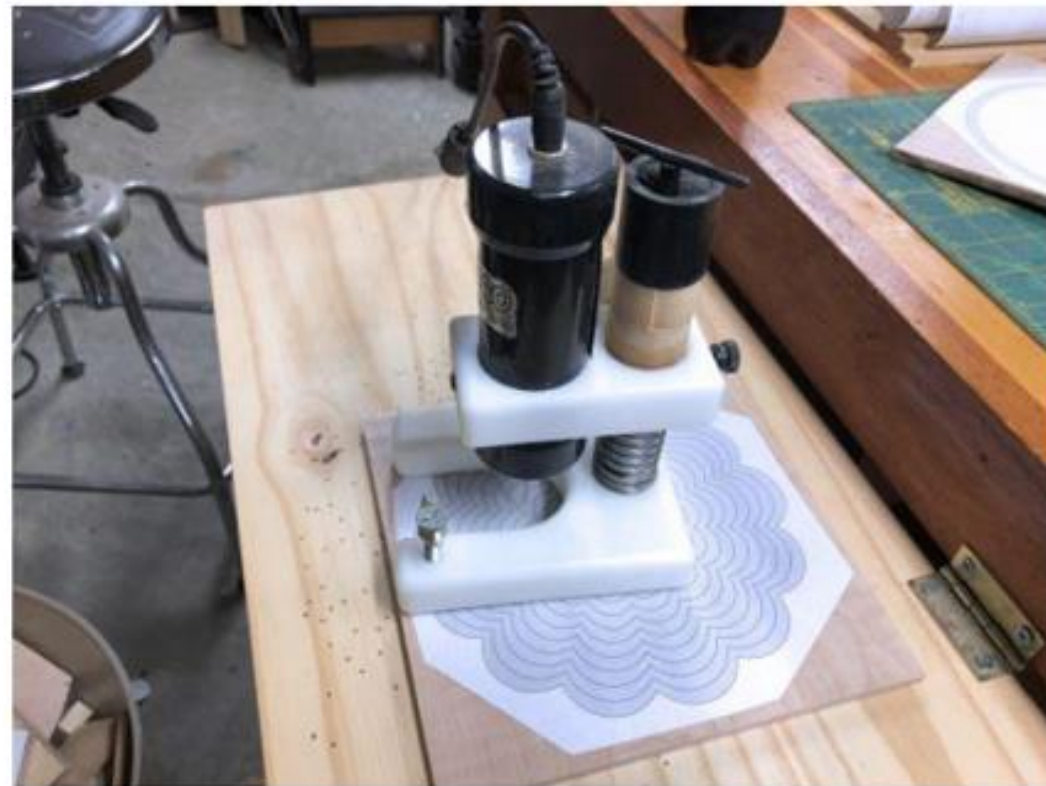
This basket was suppose to have a spiral effect when viewed from the top. This is achieved by slightly rotating each ring when they are glued back together. The effect was not as well achieved as I wanted. I decided to release the pattern anyway. If you rotate the rings in different degrees you get different effects. Just play with it before you commit to glue.



This pattern can be cut without the upper rim ring and the round bottom. If you choose this method you can save the extra piece of wood. I like the round rim and bottom so that is how I will proceed. Apply the pattern using spray adhesive.



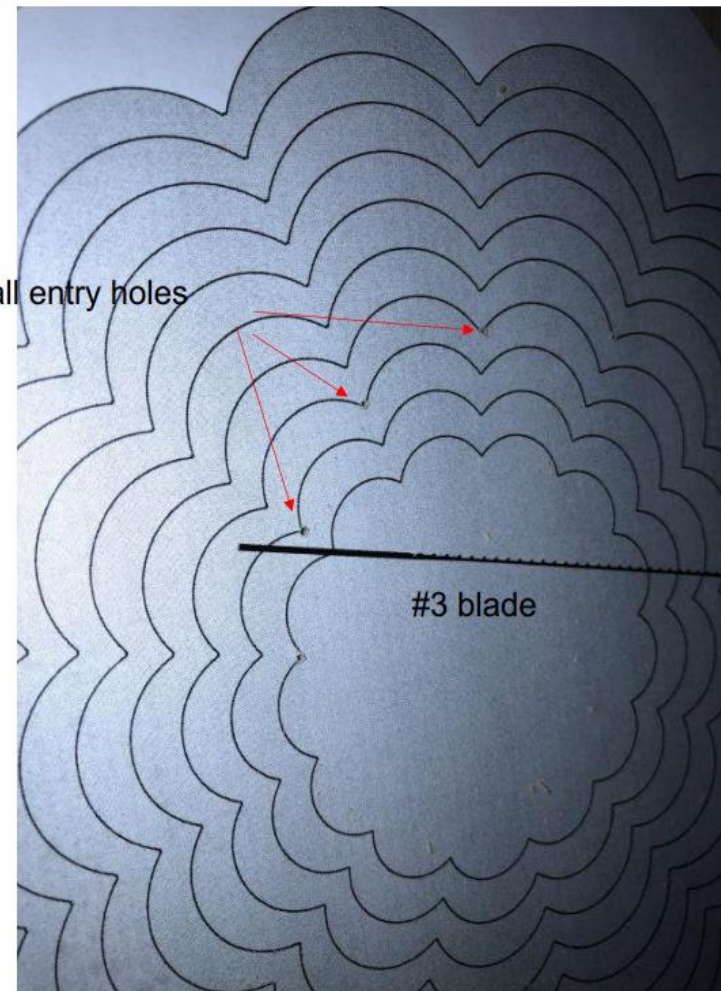
Drill the interior entry hole using the smallest bit you have.

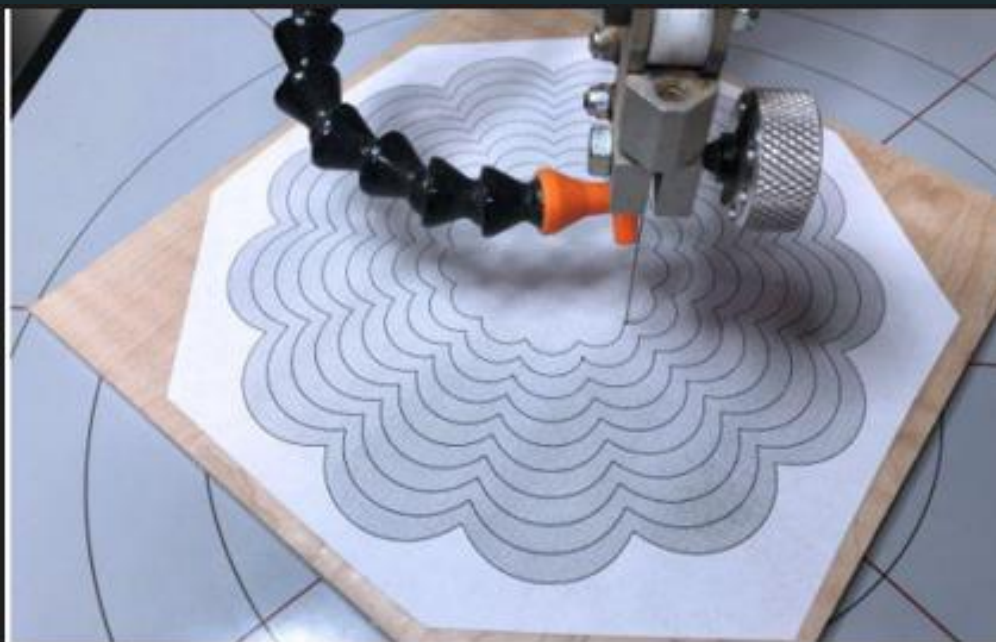
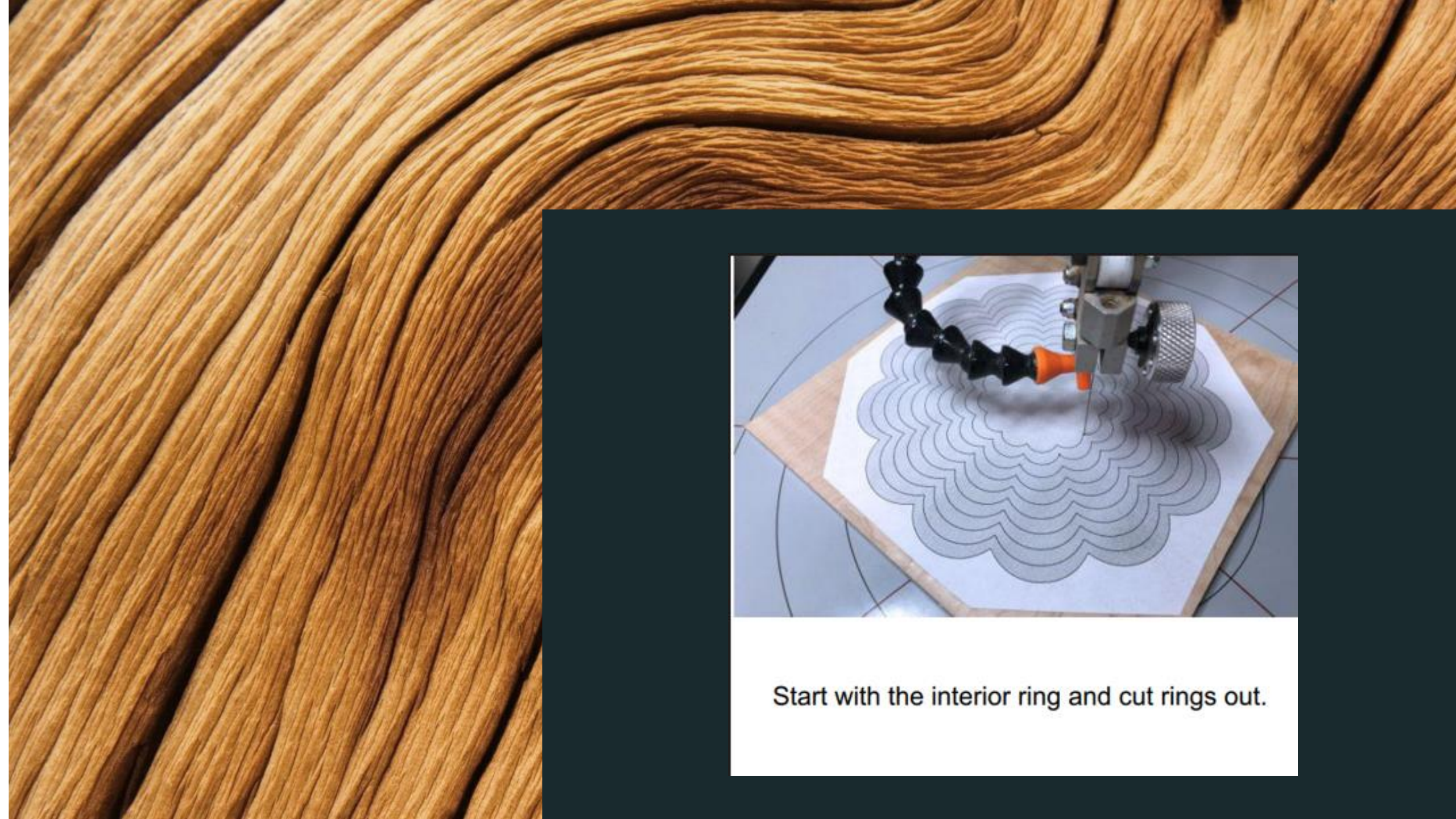


I am using a micro bit to conceal the entry holes as much as possible. I am using a #63 bit so I have to use a #3 blade. Don't be concerned if you don't have a micro bit set. Just use a 1/16" drill bit and you will not have too large of a hole to try and sand away.

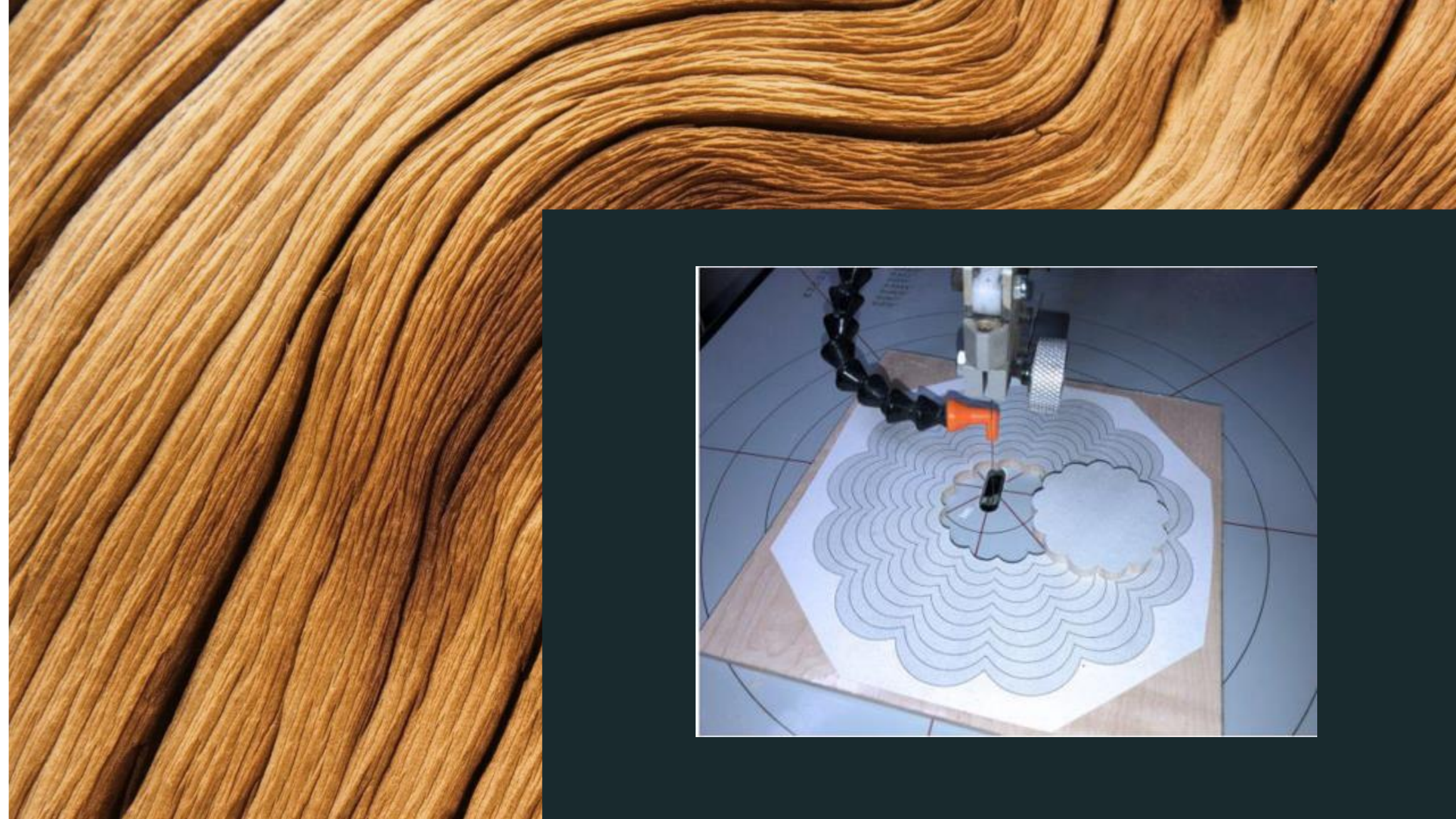
Small entry holes

#3 blade



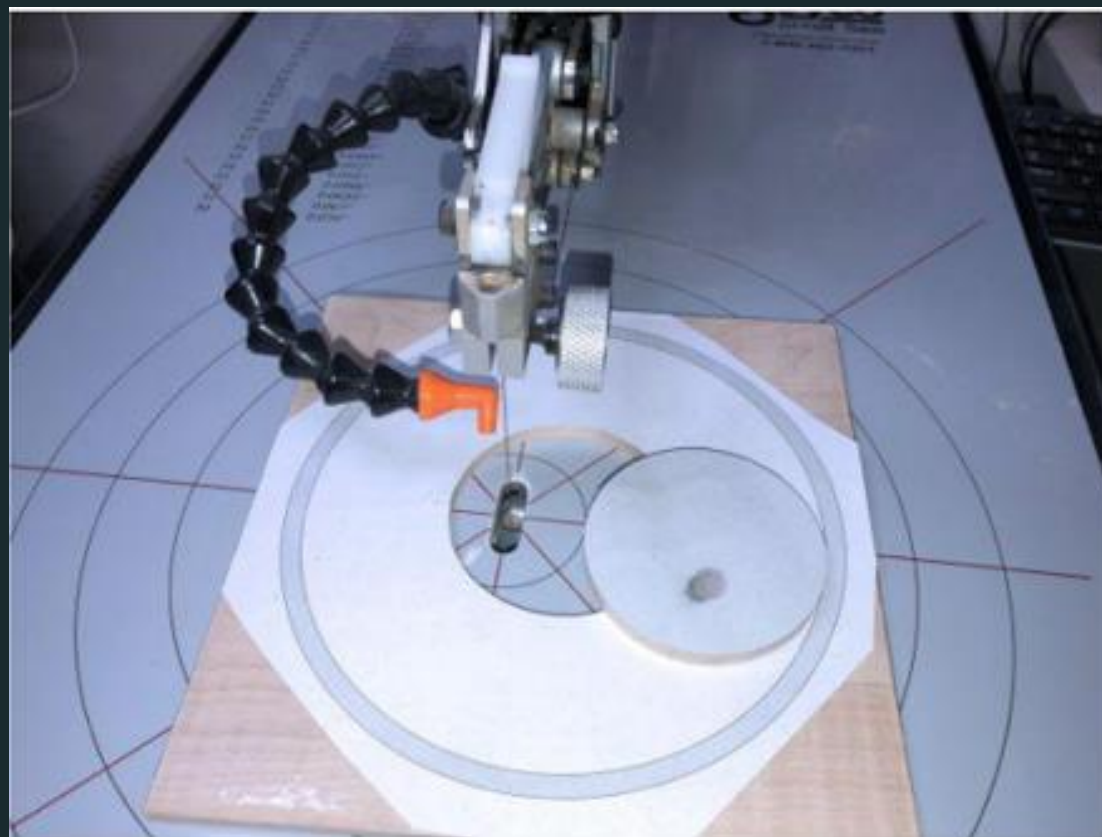
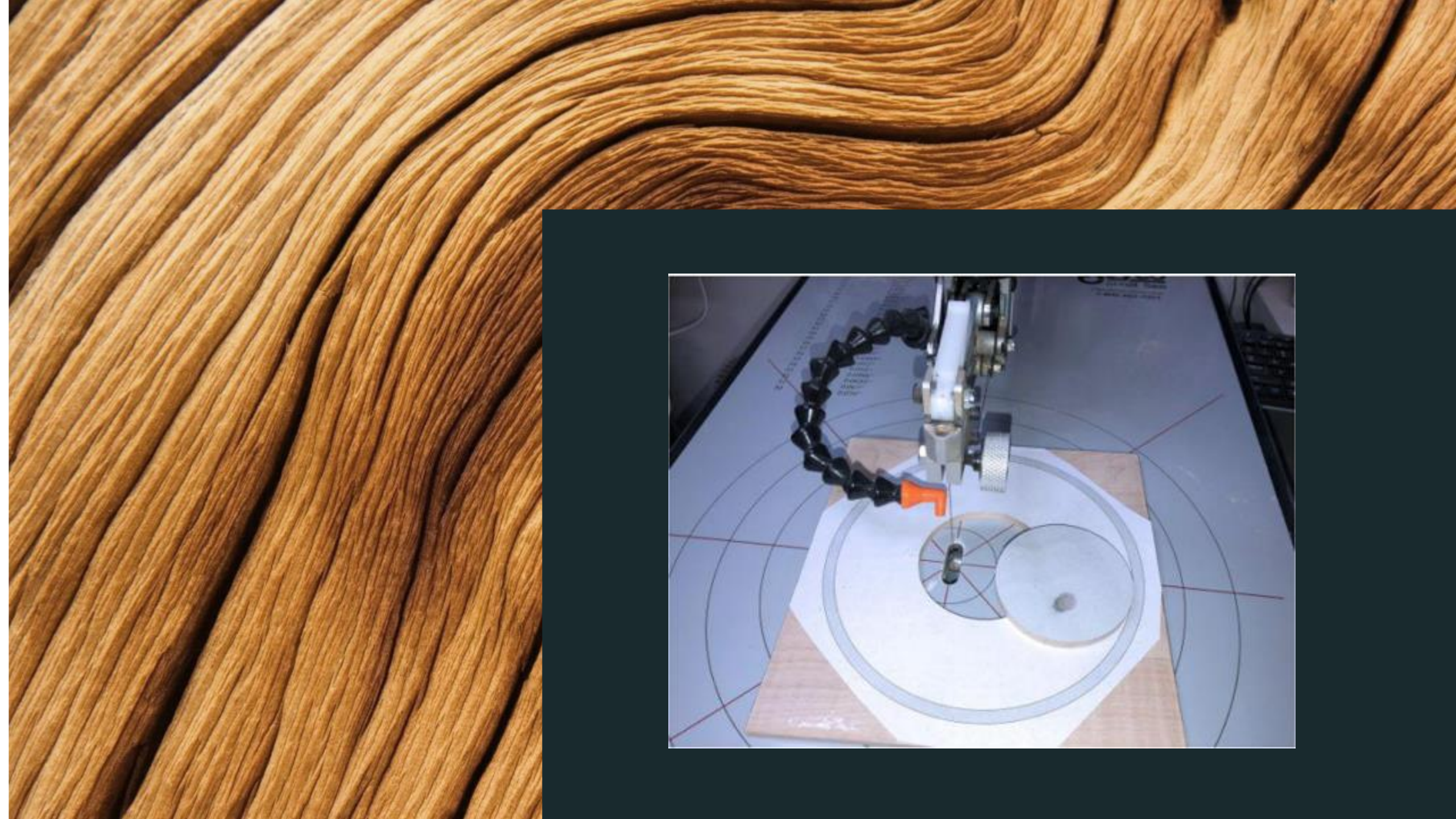


Start with the interior ring and cut rings out.





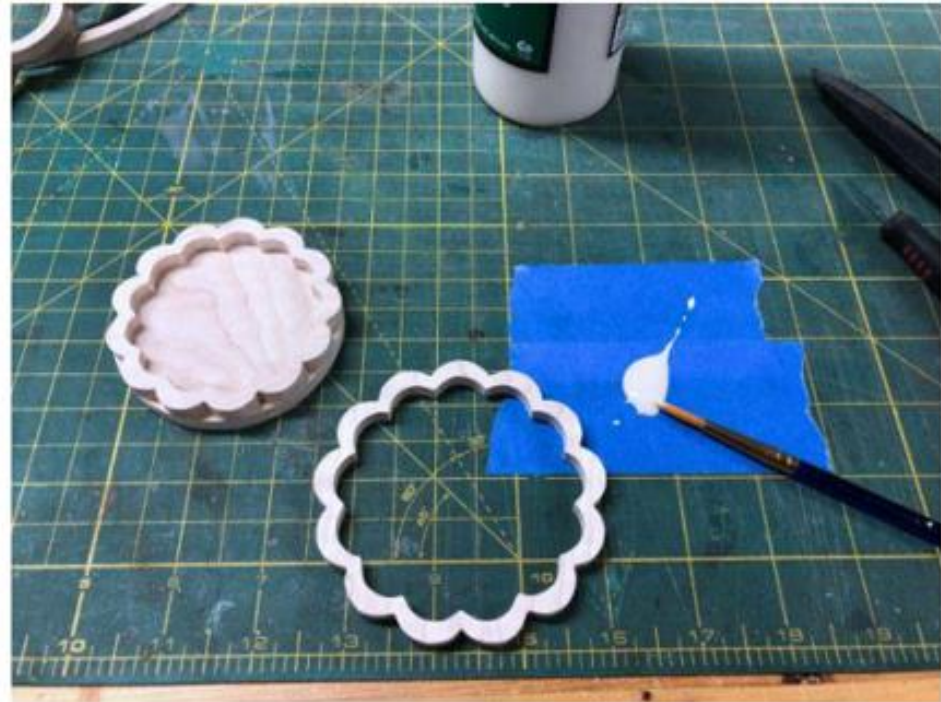
After you cut the last ring you need to decide if you will use the upper round rim and the round bottom. If you choose to use those parts then it's time to cut them out.

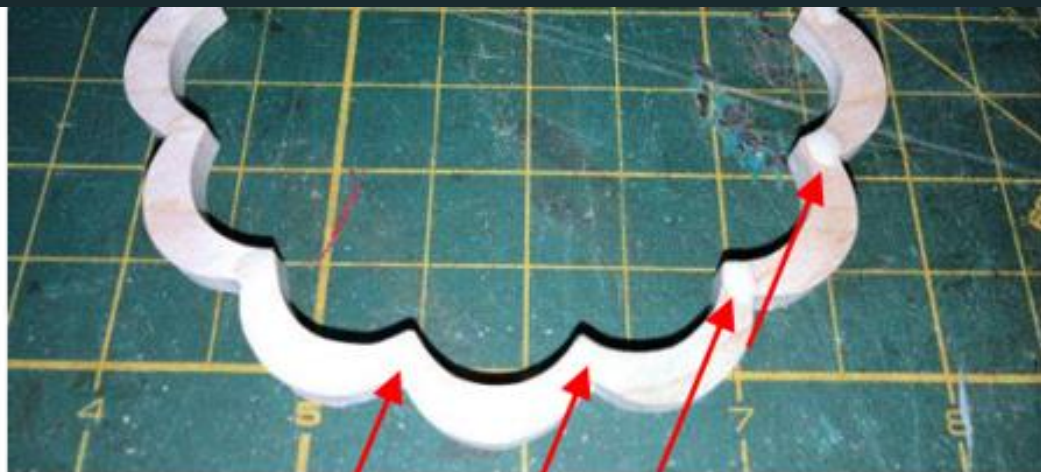




Sand and fuzzies off all the pieces.

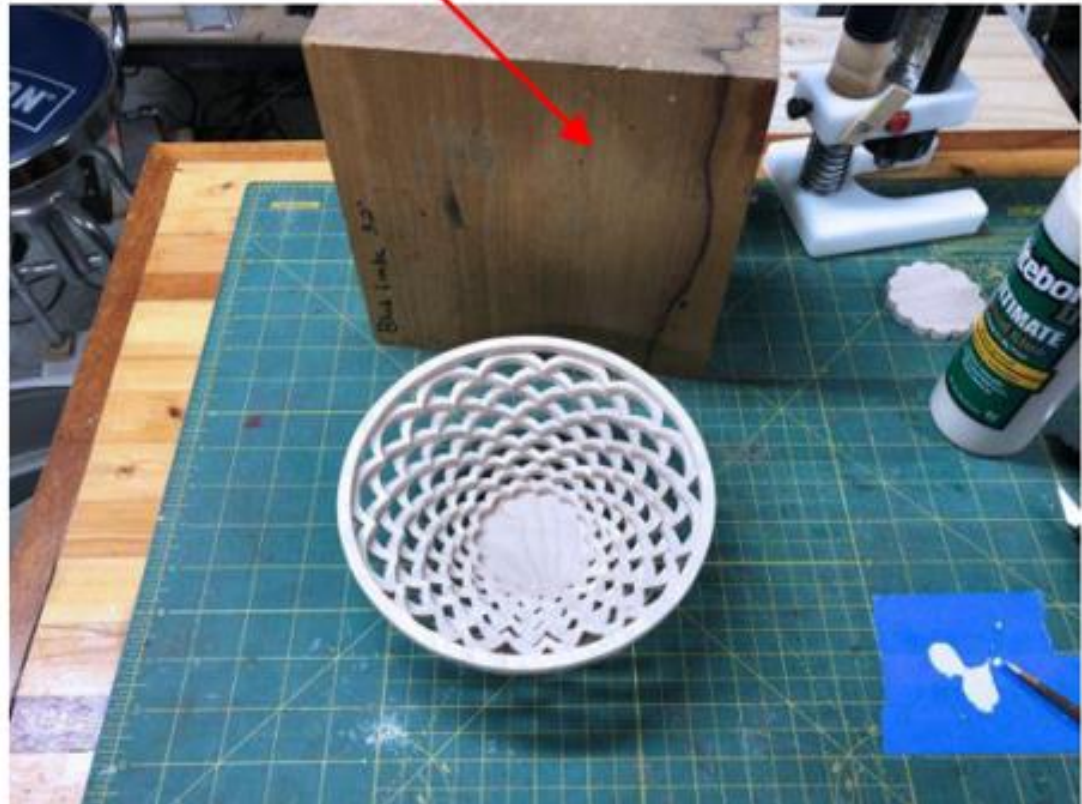
I use a small paint brush to apply the glue. Start with the interior ring and work your way up.

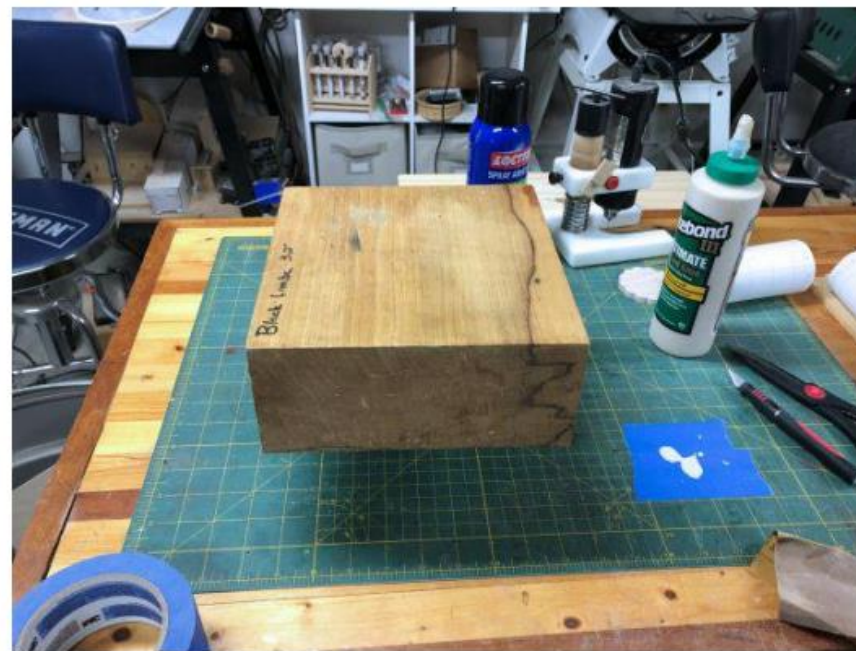




Apply glue to the tips. You don't need lots of glue. Try to prevent too much squeeze out of the glue.

We will use a heavy weight to clamp while the glue dries.





Place the weighted clamp on the bowl and let the glue cured for a couple hours.

I finished the bowl with spray acrylic. Several light coats work best.

